

# Intel® Innovation Platform Framework – Release Notes

## Release Details

- Driver: Intel® Innovation Platform Framework (Intel® IPF)
- Driver Version: 2.3.20304.7
- Date: 5/13/2026

## Changes

- Intel® IPF Installer for installation via Download Center.

## Known Issues

- None.

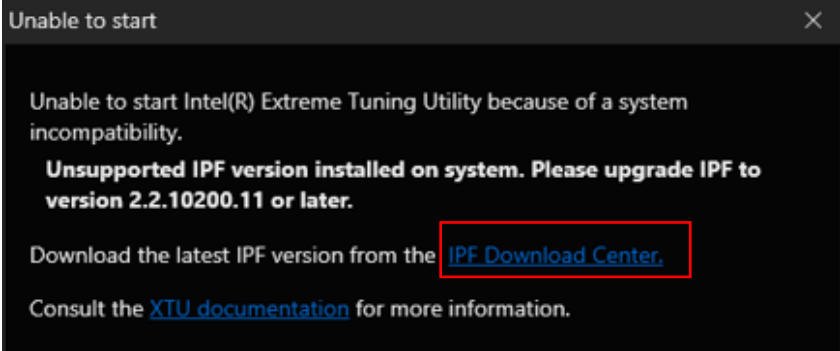
## Supported OS & Platforms

OS Version	Platform
Windows* 11 25H2, 24H2 and 23H2.	<ul style="list-style-type: none"><li>• Intel® Core™ Ultra processor family (Codename Meteor Lake, Lunar Lake, Arrow Lake, Panther Lake)</li><li>• Intel® Core™ processor family (Codename Alder Lake, Raptor Lake, and Wildcat Lake)</li></ul>

**Notice:** For Intel® Extreme Tuning Utility, Intel® IPF is only required for Arrow Lake and beyond systems.

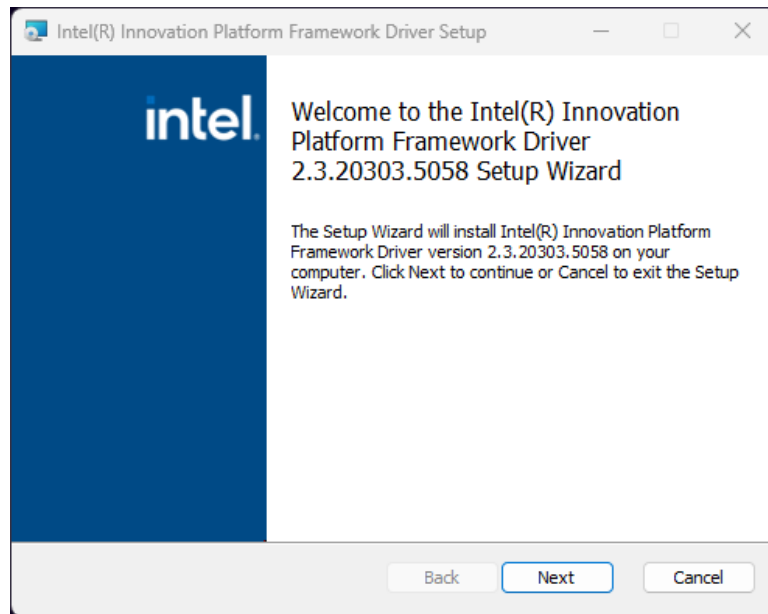
## How to Install / Update Intel® IPF

1. Only install Intel® IPF if you were prompted to do so by Intel® XTU. **NOTE:** If you have an Intel® Core™ Processor (14<sup>th</sup> Gen) or older, do not download Intel® IPF.
2. It's time to **install the new driver version**. Download latest Intel® IPF installer from Intel Download Center.
  - a. **Click** on the link in the Intel® XTU error message box.

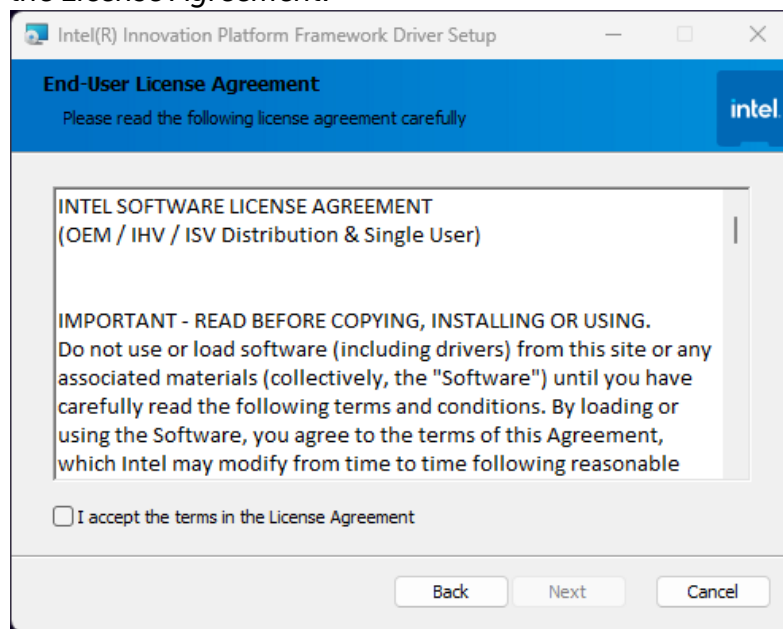


# Intel® Innovation Platform Framework – Release Notes

- b. **Double-click** on *lpf\_<version>\_Install.exe* to install IPF.
- c. **Click** on *Next* on the *Welcome to the Setup* program prompt.

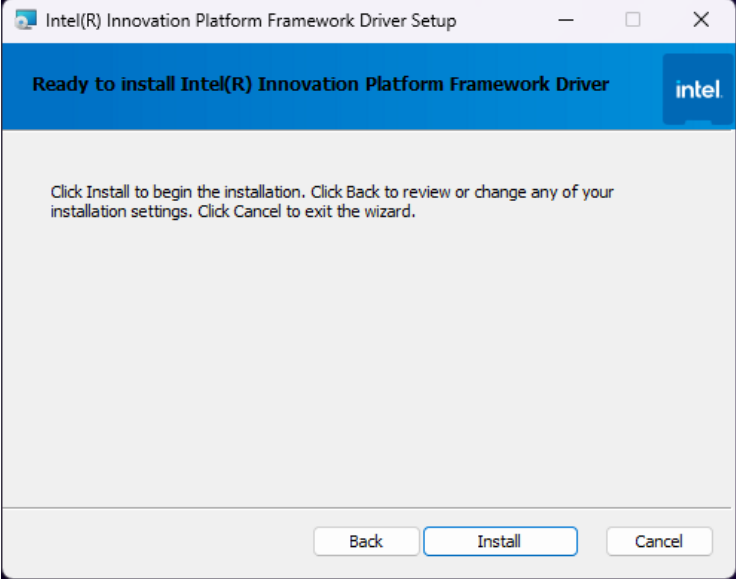


- d. Accept the *License Agreement* by **clicking** on the checkbox *I accept the terms in the License Agreement*.

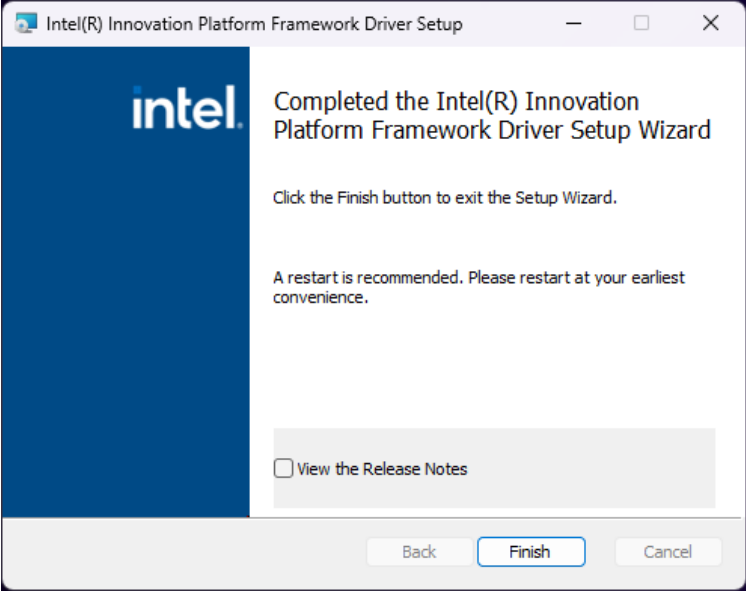


# Intel® Innovation Platform Framework – Release Notes

e. **Click *Install*** to begin the installation process.



f. **Click *Finish*** to complete the installation. Optionally, you may **click** on the **View the Release Notes** checkbox for viewing the release notes.



## Notices & Disclaimers

© Intel Corporation. Intel, the Intel logo, and other Intel marks are trademarks of Intel Corporation or its subsidiaries.

Other names and brands may be claimed as the property of others.