

Intel® Innovation Platform Framework – Release Notes

Release Details

- Driver: Intel® Innovation Platform Framework (Intel® IPF)
- Driver Version: 2.3.20303.5058
- Date: 3/30/2026

Changes

- Intel® IPF Installer for installation via Download Center.

Known Issues

- None.

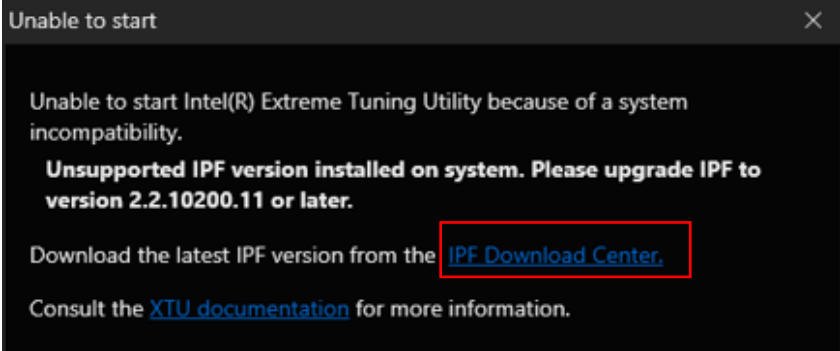
Supported OS & Platforms

| OS Version | Platform |
|----------------------------------|--|
| Windows* 11 25H2, 24H2 and 23H2. | <ul style="list-style-type: none">• Intel® Core™ Ultra processor family (Codename Meteor Lake, Lunar Lake, Arrow Lake, Panther Lake)• Intel® Core™ processor family (Codename Alder Lake and Raptor Lake) |

Notice: For Intel® Extreme Tuning Utility, Intel® IPF is only required for Arrow Lake and beyond systems.

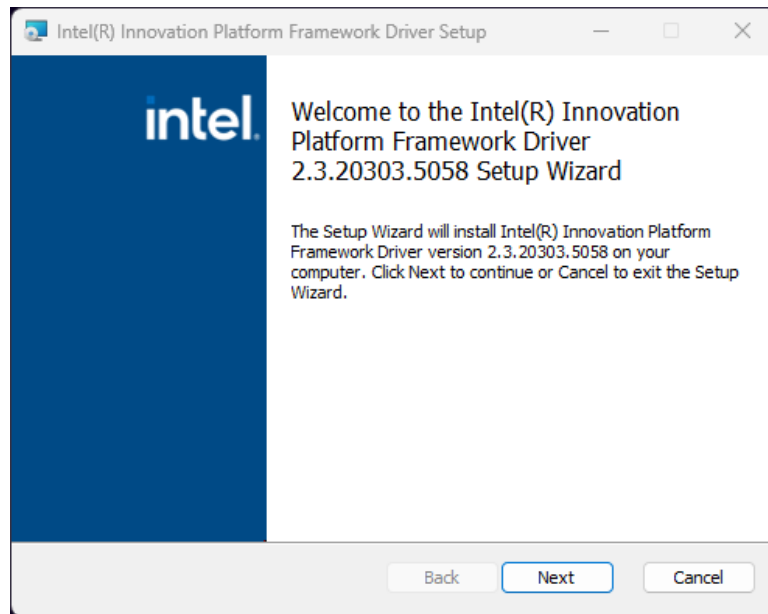
How to Install / Update Intel® IPF

1. Only install Intel® IPF if you were prompted to do so by Intel® XTU. **NOTE:** If you have an Intel® Core™ Processor (14th Gen) or older, do not download Intel® IPF.
2. It's time to **install the new driver version**. Download latest Intel® IPF installer from Intel Download Center.
 - a. **Click** on the link in the Intel® XTU error message box.

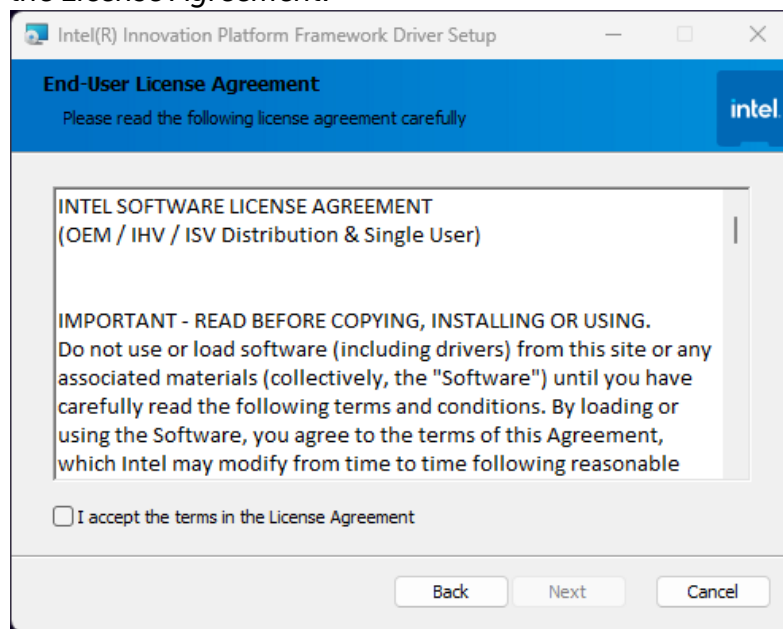


Intel® Innovation Platform Framework – Release Notes

- b. **Double-click** on *lpf_<version>_Install.exe* to install IPF.
- c. **Click** on *Next* on the *Welcome to the Setup* program prompt.

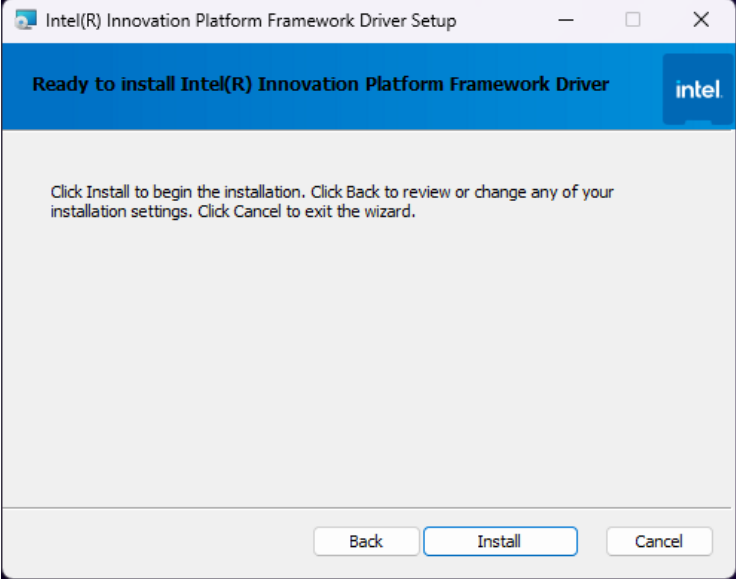


- d. Accept the *License Agreement* by **clicking** on the checkbox *I accept the terms in the License Agreement*.

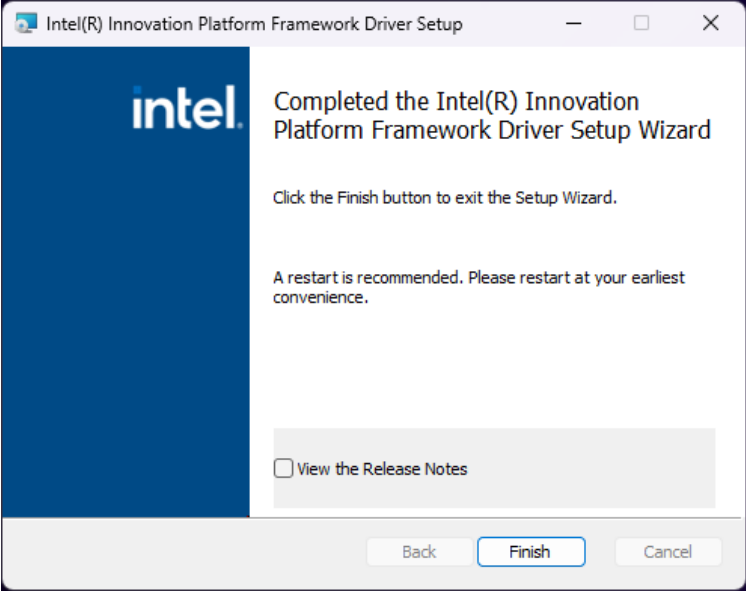


Intel® Innovation Platform Framework – Release Notes

e. Click *Install* to begin the installation process.



f. Click *Finish* to complete the installation. Optionally, you may click on the *View the Release Notes* checkbox for viewing the release notes.



Notices & Disclaimers

© Intel Corporation. Intel, the Intel logo, and other Intel marks are trademarks of Intel Corporation or its subsidiaries.
Other names and brands may be claimed as the property of others.