

Release Notes

DRIVER VERSION: 27.20.100.8853

DATE: October 19, 2020

HIGHLIGHTS:

- **Windows® 10 October 2020 Update Ready**

GAMING HIGHLIGHTS*1:

Battle endless hordes of demons as you seek to save humanity in **Doom Eternal: The Ancient Gods – Part One***, dive into the sea and battle your foes with powerful underwater ships in **Aquanox: Deep Descent*** and experience remastered visuals, enhanced audio, new game modes and new civilizations in **Age of Empires III: Definitive Edition*** on Iris Xe graphics or better!

Experience a gripping first-person horror adventure in **Amnesia: Rebirth***, gear up for the **World of Warcraft: Shadowlands* pre-patch**, customize your hero and defend Novastraia against invaders in **Torchlight III*** and Immerse yourself in the rich and dynamic world of **RuneScape*** on Iris Plus graphics or better!

Get a front row pass to gaming deals, contests, betas, and more with [Intel Software Gaming Access](#).

*2 Are you still experiencing an error preventing the driver update? Look here for [why and a solution](#).

IMPROVEMENTS:

- Playability Improvements for **Halo: Combat Evolved Anniversary*** and **Ori and the Will of the Wisps*** on 11th Generation Intel® Core™ Processors with Iris Xe Graphics.
- Super Wet Ink touch latency improvements when using pen in applications such as OneNote.

KEY ISSUES FIXED:

- Intermittent crash or hang seen in **Shadow of the Tomb Raider*** (DX12) and **Modern Combat 5*** (during loading) (Iris Xe Graphics).
- Intermittent crash or hang seen in **Red Dead Redemption 2*** (Vulkan).
- Minor graphic anomalies seen while playing **Assassin's Creed Odyssey**.
- System unable to output 8K resolution with MTC/DSC docks such as Dell Thunderbolt dock (Iris Xe Graphics).
- System hang while plug/unplug monitor from MST hub (Iris Xe Graphics).
- LG27UK850 Monitor intermittent black screen in second screen only mode via Type-C to DP (Iris Xe Graphics).
- Possible garbage display issue seen on external monitor when three monitors plugged into Adicora-A dock and one of the monitors is unplugged (Iris Xe Graphics).
- Display momentarily off on external monitor when playing video on Movies & TV application in full screen (Iris Xe Graphics).
- Possible garbage display issue seen while changing Overwatch game to Windowed mode (Iris Xe Graphics).
- Graphical glitches observed while scrolling down in Edge (Chromium) browser (Iris Xe Graphics).
- Before log-in screen on startup, momentary corruption observed with certain display adapter mode settings (Iris Xe Graphics).
- Stability fixes when connected to USB-C dock (Iris Xe Graphics).
- Small black box corruption seen while moving cursor under different options in Sekiro: Shadows Die Twice on Iris Plus graphics.
- Driver installation via igxpinstall removes OpenCL entry from the registry.

This document provides information about Intel Graphics Driver for:

- 11th Generation Intel® Core™ Processors with Intel® Iris® Xe Graphics (Tiger Lake)
- 10th Generation Intel® Core™ processors with Intel Iris Plus graphics (Ice Lake)
- 10th Generation Intel® Core™ processors with Intel UHD Graphics (Comet Lake)
- 9th Generation Intel® Core™ processors, related Pentium®/Celeron® processors, and Intel Xeon® processors, with Intel UHD Graphics 630
- 8th Generation Intel® Core™ processors, related Pentium/ Celeron processors, and Intel Xeon processors, with Intel Iris Plus Graphics 655 and Intel UHD Graphics 610, 620, 630, P630.
- 7th Generation Intel® Core™ processors, related Pentium/ Celeron processors, and Intel Xeon processors, with Intel Iris Plus Graphics 640, 650 and Intel HD Graphics 610, 615, 620, 630, P630.
- 6th Generation Intel® Core™, Intel Core M, and related Pentium processors, with Intel Iris Graphics 540, Intel Iris Graphics 550, Intel Iris Pro Graphics 580, and Intel HD Graphics 510, 515, 520, 530.
- Intel Xeon processor E3-1500M v5 family with Intel HD Graphics P530
- Pentium/ Celeron processors with Intel HD Graphics 500, 505 and Intel UHD Graphics 600, 605
- Intel® Core™ Processors with Intel® Hybrid Technology (Lakefield)

CONTENTS OF THE PACKAGE:

- Intel Graphics Driver
- Intel Audio Driver 10.26.0.9 (6th Gen and related Pentium Silver and Celeron processors)
- Intel Audio Driver 10.27.0.9 (7th, 8th, 9th, 10th Gen)
- Intel Audio Driver 11.1.0.17 (10th Gen with Iris Plus Graphics)
- Intel Audio Driver 11.2.0.4 (Intel® Core™ Processors with Intel® Hybrid Technology)
- Intel Media SDK Runtime (10.0.0.039)
- Intel Graphics Compute Runtime for OpenCL™ Driver
- Intel Graphics Command Center
- Vulkan*³ Runtime Installer
- Intel Graphics Installer (1.7.125)
- OneAPI Level Zero Loader and Validation Layer

- Intel® Graphics Compute Runtime for OneAPI Level Zero specification

OPERATING SYSTEM SUPPORT:

On 11th Generation Intel Core, 10th Generation Intel Core, 9th Generation Intel Core, 8th Generation Intel Core, 7th Generation Intel Core, and 6th Generation Intel Core processors, Intel Xeon processors for mobile workstations and related Pentium/Celeron processors:

- Microsoft Windows® 10-64 - Fall Creators Update (1709)
- Microsoft Windows® 10-64 - April 2018 Update (1803)
- Microsoft Windows® 10-64 - October 2018 Update (1809)
- Microsoft Windows® 10-64 - May 2019 Update (1903)
- Microsoft Windows® 10-64 - November 2019 Update (1909)
- Microsoft Windows® 10-64 - May 2020 Update (2004)
- Microsoft Windows® 10-64 - October 2020 Update (20H2)

KNOWN ISSUES:

- Intermittent crash or hang may be seen Hunt: Showdown, Avengers* (DX12), Tom Clancy's Rainbow Six Siege* (DX11), Dark Souls III, Baldur's Gate 3 (Vulkan) (Iris Xe Graphics).
- Intermittent crash or hang may be seen in Tom Clancy's Ghost Recon Breakpoint* (DX11), Horizon Zero Dawn* (DX12), Call of Duty: Modern Warfare* (DX12), Death Stranding* (DX12), Serious Sam 4: Planet Badass* (DX12).
- Crysis Remastered may crash to desktop while loading to gameplay (Iris Xe Graphics).
- Minor graphic anomalies may be seen in Shadow of the Tomb Raider* (DX12) (when Tessellation is ON), Hitman 2* (DX12), Battlefield V* (DX12), Red Dead Redemption 2* (Vulkan), World of Warcraft*(DX12), Microsoft Flight Simulator* (Iris Xe Graphics).
- Minor graphics anomalies may be observed in PGA Tour 2K21*, Star Wars Battlefront 2* (DX12), Mount & Blade II: Bannerlord* (DX11), Baldur's Gate 3 (Vulkan).
- Flicker may be observed on external monitor with HDR enabled during system shut down (Iris Xe Graphics).
- Panel Self Refresh may be disabled while unplugging or plugging AC power during video playback (Iris Xe Graphics).
- Amazon/Netflix video playback issues such as freeze, blank screen, etc. may be observed with Edge on Chromium browser.

SUPPORTED PRODUCTS:

HARDWARE

All platforms with the following configurations are supported:

Intel Graphics ¹	DirectX*4	OpenGL*	OpenCL	Vulkan*	Intel Quick Sync Video
11 th Generation Intel Core processors with Intel® Iris® Xe Graphics	12	4.6	3.0 ⁱ	1.2	Yes
10 th Generation Intel Core processors with Intel Iris Plus Graphics	12	4.6	2.1	1.2	Yes
10 th Generation Intel Core processors with Intel UHD Graphics	12	4.6	2.1	1.2	Yes
9 th Generation Intel Core processors with Intel UHD Graphics 630	12	4.6	2.1	1.2	Yes
8 th Generation Intel Core processors with Intel Iris Plus Graphics 655	12	4.6	2.1	1.2	Yes
8 th Generation Intel Core processors with Intel UHD Graphics 610/620/630/P630	12	4.6	2.1	1.2	Yes
7 th Generation Intel Core processors with Intel Iris Plus Graphics 640/650	12	4.6	2.1	1.2	Yes
7 th Generation Intel Core processors with Intel HD Graphics 610/615/620/630	12	4.6	2.1	1.2	Yes
Intel Xeon processor E3-1500M v5 family with Intel HD Graphics P630	12	4.6	2.1	1.2	Yes
Pentium Processors with Intel HD Graphics 610	12	4.6	2.1	1.2	Yes
6 th Generation Intel Core processors with Intel Iris Pro Graphics 580	12	4.6	2.0	1.2	Yes
6 th Generation Intel Core processors with Intel Iris Graphics 540/550	12	4.6	2.0	1.2	Yes
6 th Generation Intel Core processors with Intel HD Graphics 520/530	12	4.6	2.0	1.2	Yes
Intel Xeon processor E3-1500M v5 family with Intel HD Graphics P530	12	4.6	2.0	1.2	Yes
Intel Xeon processor E3-1500M v5 family with Intel Iris Pro Graphics P580	12	4.6	2.0	1.2	Yes
Intel Core M processors with Intel HD Graphics 515	12	4.6	2.0	1.2	Yes
Pentium and Celeron processors with Intel HD Graphics 500/505/510	12	4.6	1.2	1.2	Yes
Pentium and Celeron processors with Intel UHD Graphics 600/605	12	4.6	1.2	1.2	Yes
Intel® Core™ Processors with Intel® Hybrid Technology	12	4.6	2.1	1.2	Yes

Note¹: "Product is based on a published Khronos Specification and has been submitted to, and expected to pass, the Khronos Conformance Process. Current conformance status can be found at www.khronos.org/conformance."

If you are uncertain of which Intel processor is in your computer, Intel recommends using the [Intel Processor Identification Utility](#) or Install the [Intel Driver & Support Assistant](#) (previously called Intel Driver Update Utility) to identify your Intel processor.

More on Intel Core Processors

For more information on the Intel Core processor family, Intel Xeon E processor family, and 11th Generation Intel Core processors, please visit:

[Intel 11th Generation Core Processors](#)

<http://www.intel.com/content/www/us/en/processors/core/core-processor-family.html>

<http://www.intel.com/content/www/us/en/processors/xeon/xeon-processor-e3-family.html>

<http://www.intel.com/graphics>

Be sure to check out gameplay.intel.com, where you'll find recommended in-game settings for your Intel Graphics system for many more of your favorite games.

We continuously strive to improve the quality of our products to better serve our users and appreciate [feedback](#) on any issues you discover and suggestions for future driver releases. If you have an issue to submit, **please follow the guidance found here** [Default level information for reporting Graphics issues](#).

Intel, the Intel logo, Celeron, Intel Core, Iris, Pentium and Xeon are trademarks of Intel Corporation or its subsidiaries in the U.S. and/or other countries.

* Other names and brands may be claimed as the property of others.

*¹ Intel Labs conducts independent testing of supported titles on Intel platforms to ensure playability. Please refer to publisher system requirements to ensure compatibility with your system.

² Graphics Driver Smart Installer Enhancement allows end-users to upgrade systems with OEM DCH drivers to newer Intel generic DCH drivers. OEM customizations are preserved during this upgrade process, in accordance with Microsoft DCH driver design principles (refer to Microsoft documentation, "Extension INF Publishing Whitepaper" to learn more). The installer will continue to restrict OEM non-DCH to Intel Generic non-DCH upgrades as well as OEM non-DCH to Intel Generic DCH driver upgrades. End-users will continue to be referred to OEM websites.

WARNING: Installing this Intel generic graphics driver will overwrite your Computer Manufacturer (OEM) customized driver. OEM drivers are handpicked, customized, and validated to resolve platform-specific issues, enable features and enhancements, and improve system stability. The generic driver's intention is to temporarily test new features, game enhancements, or check if an issue is resolved. Once testing is complete Intel advises reinstalling the OEM driver until they validate it and release their own version.

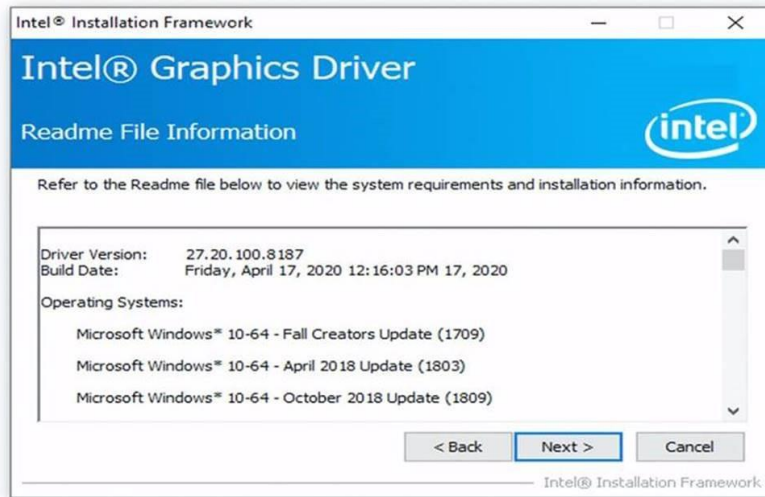
Any graphics issues found using Intel generic graphics drivers should be [reported directly to Intel](#). Corporate customers should always use OEM drivers and report all issues through the vendor they purchased the platforms and support through.

³ Product is conformant with the Vulkan 1.2 specification. Vulkan* and the Vulkan* logo are registered trademarks of the Khronos Group Inc*.

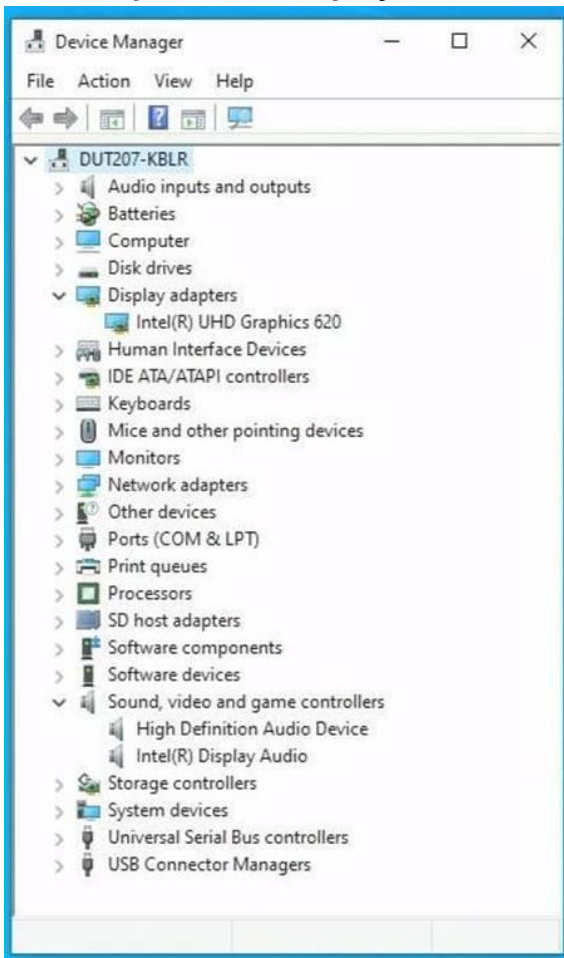
⁴ In the Intel Graphics Command Center (System > Driver), the 'Microsoft DirectX version refers to the operating system's DirectX version. The DirectX 12 API is supported but some optional features may not be available. Applications using the DirectX 12 API should query for feature support before using specific hardware features. Please note that DirectX12 is only supported on Windows 10 and DirectX11.3 support is also available on supported Microsoft* operating systems.

*5 Starting with driver 27.20.100.8190, there will no longer be an Intel Graphics Driver entry in Add or Remove Programs as recommended by Microsoft. Additionally, Graphics and Audio drivers must be uninstalled separately and only from Device Manager, as shown in the screenshots below.

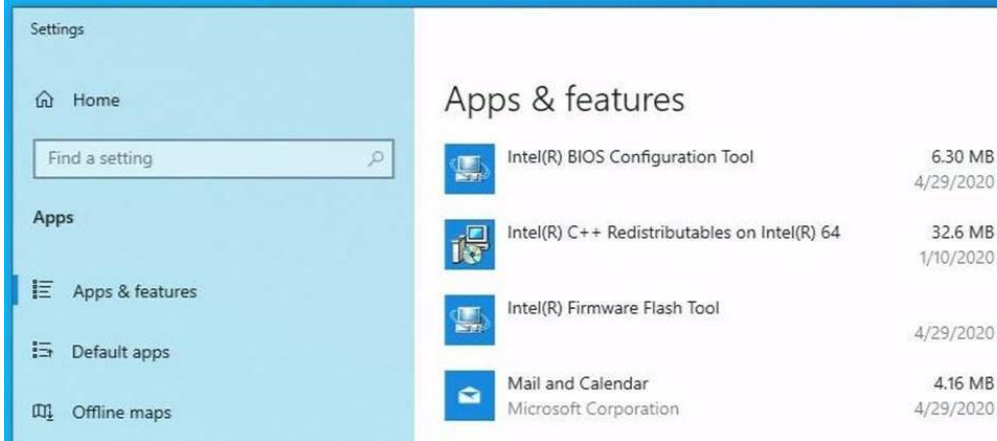
Installation Process



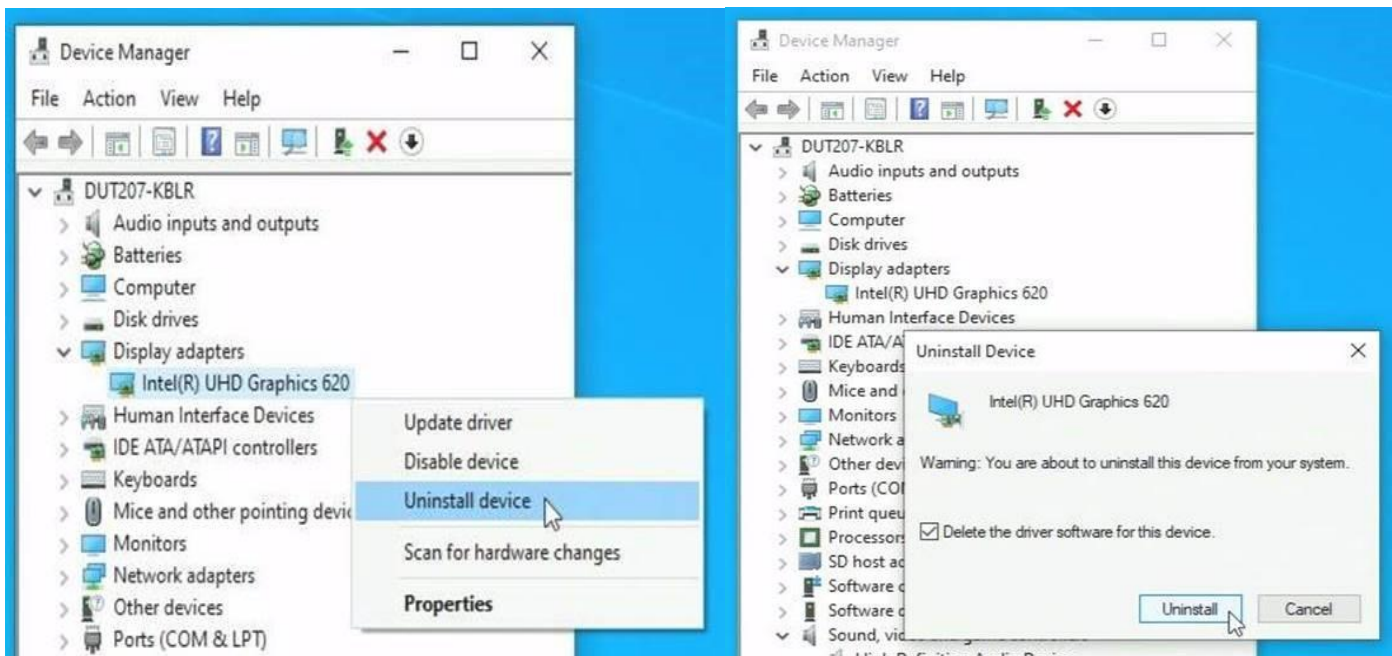
Intel Graphics and Display Audio Drivers Installed



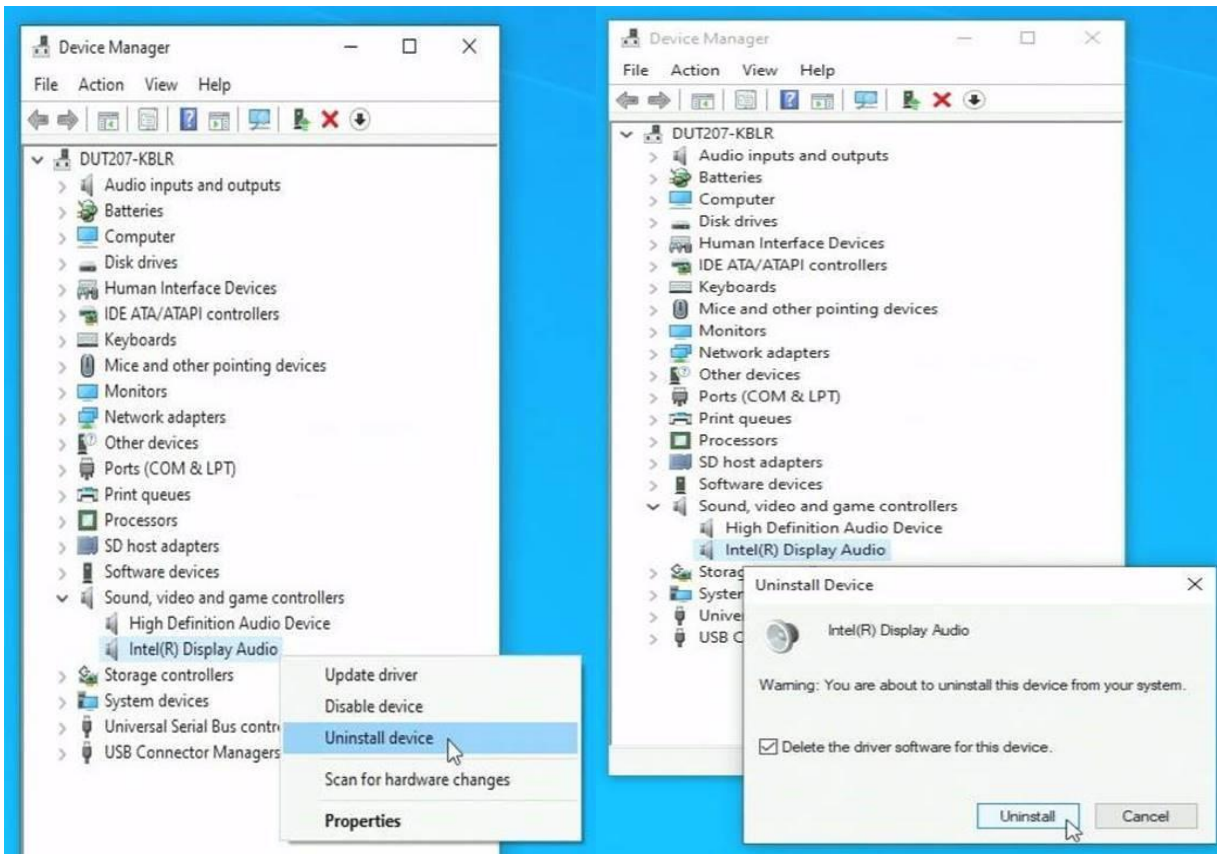
Intel Graphics drivers from 27.20.100.8190 do not create "Add or remove programs" entry



Uninstalling Intel Graphics Driver



Uninstalling Intel Display Audio Driver



Intel Graphics and Display Audio Drivers Uninstalled

