

Intel® Endpoint Management Assistant (Intel® EMA) / BigFix Lifecycle Integration Package

Quick Start Guide

Notices & Disclaimers

Intel technologies may require enabled hardware, software or service activation.

No product or component can be absolutely secure.

Your costs and results may vary.

© Intel Corporation. Intel, the Intel logo, and other Intel marks are trademarks of Intel Corporation or its subsidiaries. Other names and brands may be claimed as the property of others.

Rev 1.1
8-1-2020

QUICK-Start Guide

Contents

Pre-requisites	1
Getting started	2
Download the Integration Package.....	2
Download and Install the Intel® Setup and Configuration Software “Configurator” Package.	3
Configure Endpoint Groups	4
Configure Intel® Endpoint Management Assistant (Intel® EMA) Agent Fixlets.....	4
Release the Right-Click Integration Fixlet	5

Pre-requisites

BigFix® Lifecycle is installed in your environment and the BigFix® agent is fully deployed and you have a master operator account

Intel® EMA is installed and ready to assign endpoints.

An introduction to Intel EMA is available here:

<https://www.intel.com/content/www/us/en/architecture-and-technology/intel-active-management-technology/remote-manageability-for-workforce.html>

Intel EMA installation and configuration information is available from the product download page here:

<https://downloadcenter.intel.com/download/28994/Intel-Endpoint-Management-Assistant-Intel-EMA->

Intel® EMA / BigFix Lifecycle Integration Package

QUICK-Start Guide

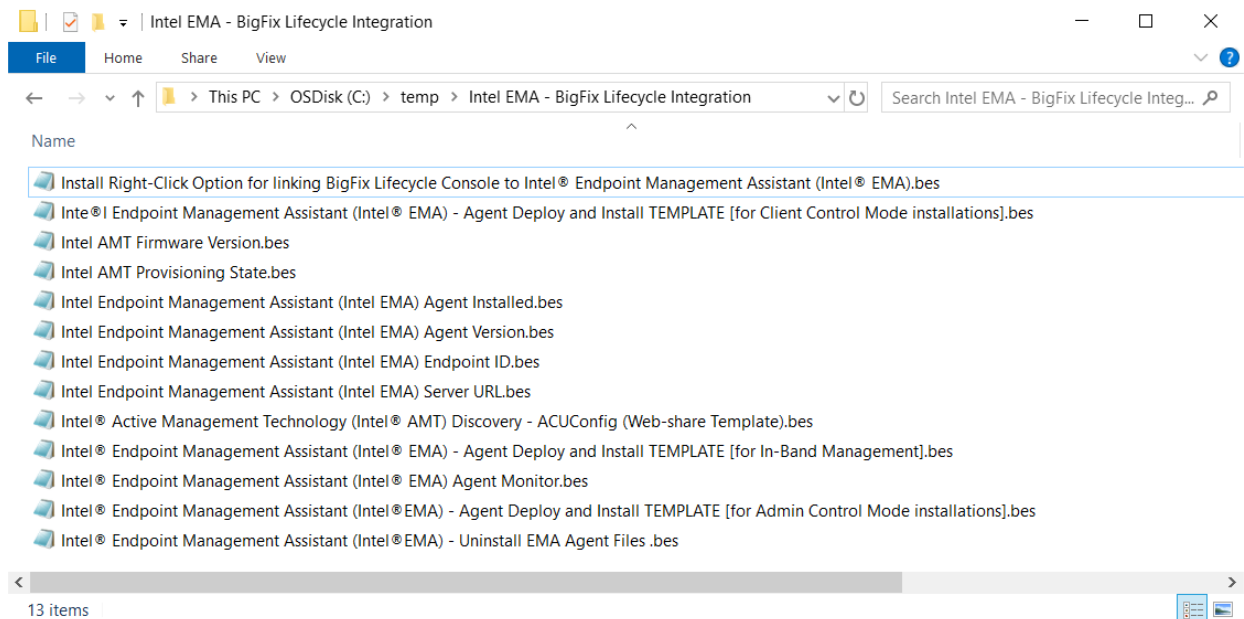
Getting started

Download the Integration Package

<https://downloadcenter.intel.com/download/29797?v=t>

Expand and save the contents to a temporary folder on your BigFix Console server

In BigFix Console, select [File] -> [Import] and add the .bes files



Intel® EMA / BigFix Lifecycle Integration Package

QUICK-Start Guide

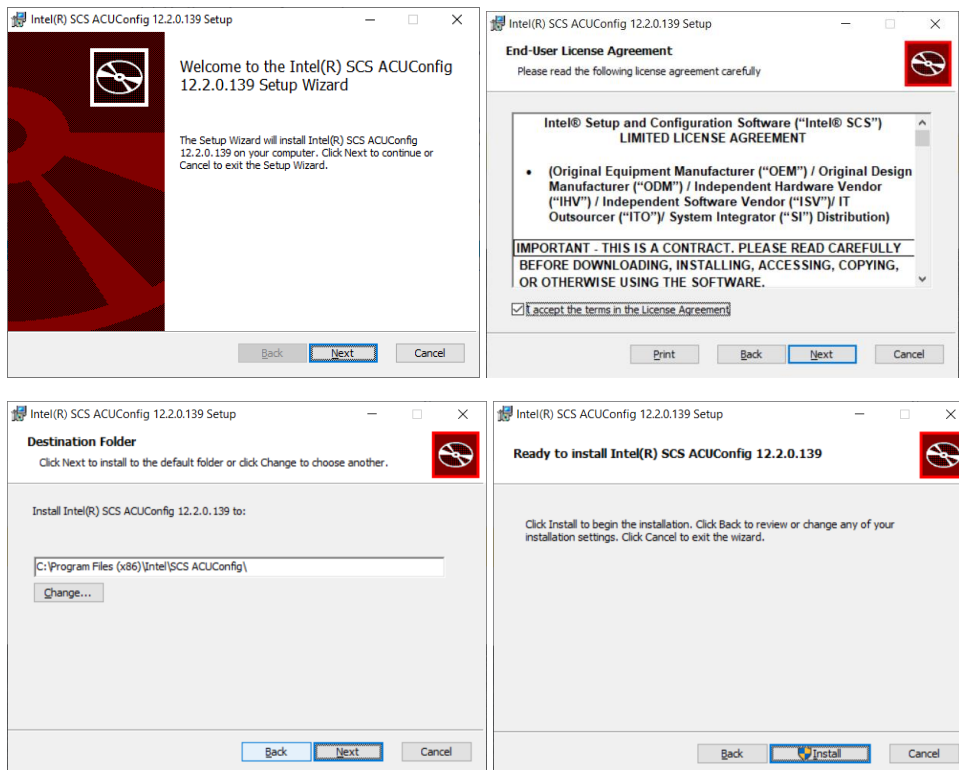
Download and Install the Intel® Setup and Configuration Software “Configurator” Package.

Click the [Download] button here:

<https://downloadcenter.intel.com/download/26505/Intel-Setup-and-Configuration-Software-Intel-SCS->



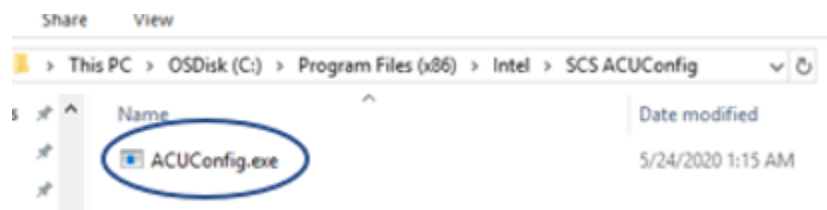
Expand the .zip file and run the **ACUConfigInstaller.msi** found in the Configurator sub-folder.



Intel® EMA / BigFix Lifecycle Integration Package

QUICK-Start Guide

Navigate to the installation folder and copy ACUConfig.exe to a web-shareable location in your enterprise.



Configure Fixlets as directed in the description starting with “Intel® Active Management Technology (Intel® AMT) Discovery - ACUConfig (Web-share Template)” Once this fixlet is configured and run, the imported Retrieved Properties will begin to populate:

Computers					Search Computers
Computer Name	Intel Endpoint Management Assistant (Int...	Intel Endpoint Management As...	Intel AMT Firmware Version	Intel Endpoint Manag...	Intel Endpoint Manager
besdev	Intel EMA Not Installed	Intel EMA Server URL Not Found	Intel AMT Discovery Fixlet Not ...	Intel EMA Not Installed	false

Agent information will populate once the Intel® EMA Agent installation fixlets are configured and deployed.

Configure Endpoint Groups

In the Intel® EMA Console, configure your endpoint groups and generate agents. Copy agent and policy files to an internal web-share.

See Intel EMA documentation for instructions

Configure Intel® Endpoint Management Assistant (Intel® EMA) Agent Fixlets

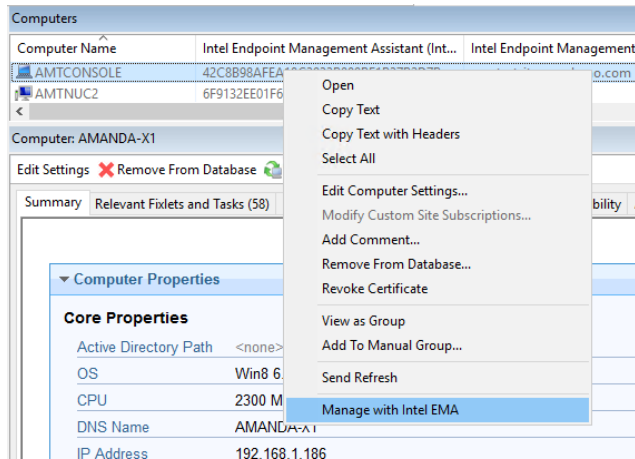
Configure and release the Intel EMA Agent deployment fixlets as applicable.

See Fixlet description and/or the Intel® Endpoint Management Assistant – BigFix® Lifecycle Integration Guide” included with the integration package, for instructions.

Intel® EMA / BigFix Lifecycle Integration Package

QUICK-Start Guide

Release the Right-Click Integration Fixlet



Run the “Install Right-Click Option for linking BigFix Lifecycle Console to Intel® Endpoint Management Assistant (Intel® EMA)” Fixlet against the BigFix console hosts. This is a per-user configuration so will need to be allowed to run for each administrator carrying both roles. This will use the Retrieved Property data to construct a Right-Click option to jump from the BigFix Console to the Intel EMA Console.