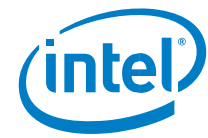


HDMI Firmware Update Guide for Intel® NUC Products

**Intel® NUC10i3FN, NUC10i5FN,
NUC10i7FN**

December 2020



You may not use or facilitate the use of this document in connection with any infringement or other legal analysis concerning Intel products described herein. You agree to grant Intel a non-exclusive, royalty-free license to any patent claim thereafter drafted which includes subject matter disclosed herein.

No license (express or implied, by estoppel or otherwise) to any intellectual property rights is granted by this document.

All information provided here is subject to change without notice. Contact your Intel representative to obtain the latest Intel product specifications and roadmaps.

The products described may contain design defects or errors known as errata which may cause the product to deviate from published specifications. Current characterized errata are available on request.

Copies of documents which have an order number and are referenced in this document may be obtained by calling 1-800-548-4725 or by visiting: <http://www.intel.com/design/literature.htm>.

Intel and the Intel logo are trademarks of Intel Corporation or its subsidiaries in the U.S. and/or other countries.

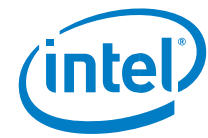
*Other names and brands may be claimed as the property of others.

Copyright © 2019, Intel Corporation. All rights reserved.



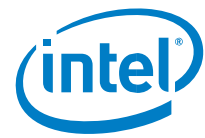
Contents

1.0	HDMI Firmware Update Process	5
1.1	Update the HDMI Firmware via the Graphical Interface (GUI)	5
1.2.	Update the HDMI Firmware via the Command Line with BobcatISP.exe	7



Revision History

Date	Revision	Revision History
November 2019	1.0	Initial Release
January 2020	1.0.1	Added instructions for downgrading HDMI FW.
March 2020	1.02	Fixed application so that Program Customized Data Block is de-selected by default.
December 2020	1.03	Added information for updating to version: 1.78.2.0.6



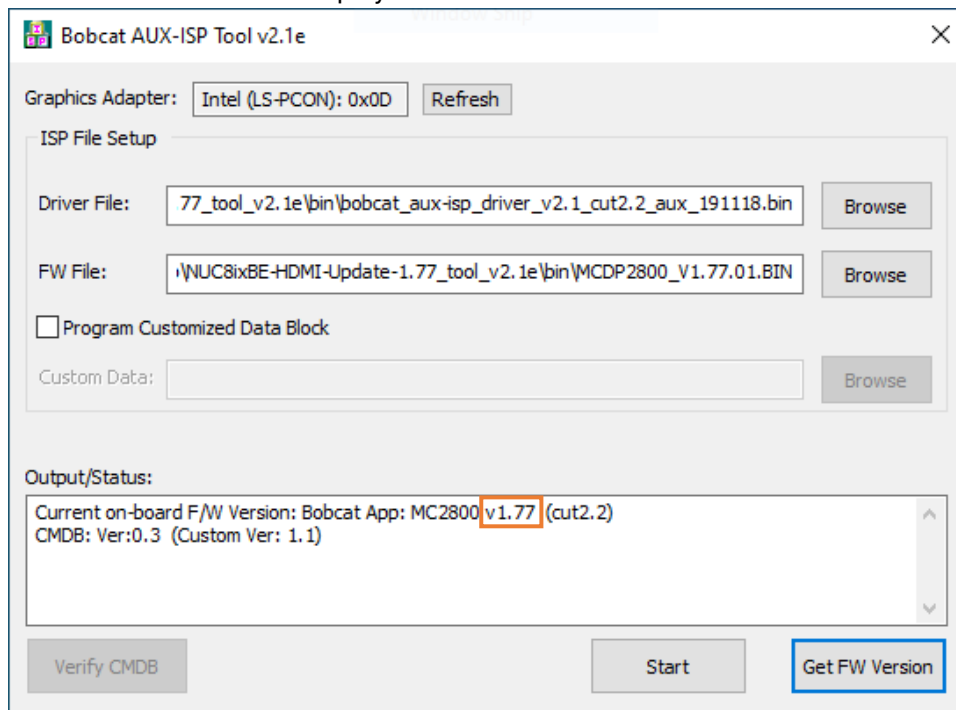
1.0 HDMI Firmware Update Process

This document guides you on updating the HDMI firmware on Intel® NUC family NUC10i3FN, NUC10i5FN, NUC10i7FN. The HDMI Firmware Update Tool **only** runs in Windows 10.

Do not turn off the Intel NUC, your display or disconnect the HDMI cable until the update is complete.

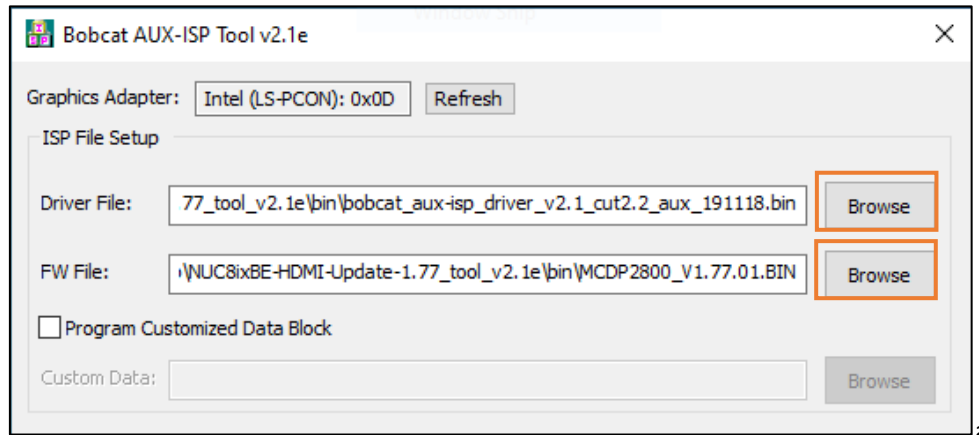
1.1 Update the HDMI Firmware via the Graphical Interface (GUI)

1. Connect a HDMI monitor to the **HDMI Port**.
2. Turn on the Intel NUC.
3. In Windows File Explorer, navigate to the folder where you unzipped the download.
4. Right-click the file **BobcatAuxISPTool.exe** and select, **Run as administrator** to launch the update tool.
5. Click **Get FW Version** to display the current firmware version.

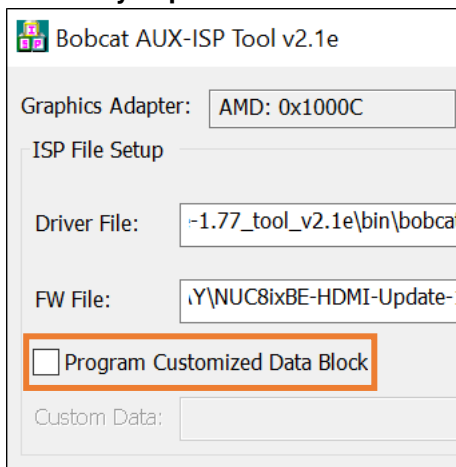




6. If the firmware needs to be updated, browse to the **/bin** folder for the Driver and FW Files:
 - Driver File: **bobcat_aux-isp_driver_v2.1_cut2.2_aux**
 - FW File: **MCDP2800_C21_C22_V1.78.2.0.6_LSPCON_MP_FHC_SIGNED_CMDDB_FN_201130**



7. **Extremely important:** Make sure the box for Program Device Certificate is **not** selected:

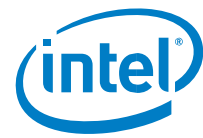


8. Click the **Start** button and confirm that you want to update the firmware.

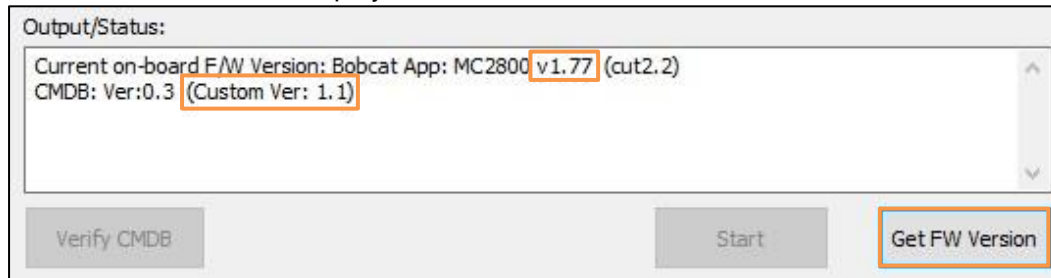
Note: The screen will go black for up to a minute. Do not turn off the Intel NUC, the monitor or disconnect the HDMI cable until the update is complete.

9. Click OK when the update finishes.
10. Restart the Intel NUC.

To check the new HDMI firmware version:



1. Double-click the file **BobcatAuxISPTool.exe** to launch the update tool.
2. Click **Get FW Version** to display the firmware version.



1.2 Update HDMI Firmware via the Command Line with BobcatISP.exe

Do not turn off the Intel NUC, your display or disconnect the HDMI cable until the update is complete.

The HDMI Firmware Update Tool - **BobcatISP.exe** – *can be run* as a command-line based tool. You can use this tool to create a one-click update file to mass deploy an HDMI firmware update to many Intel NUCs. Follow the instructions below

Connect an HDMI monitor to the **HDMI Port**.

Find the current HDMI Firmware version:

1. Run the Command line: **BobcatISP.exe -ChipInfo**
2. Look for the F/W version in the results:

```
Bobcat ISP Tool v2.08
Graphics adapter: Intel (LS-PCON): 0x0E
[Chip Information]
Current on-board F/W Version: Bobcat App: MC2800 v1.xx.xx (cut2.2)
Chip serial #: 2862260
CMDB: Ver:0.3 (Custom Ver: 1.x)
```

To update the HDMI firmware from the command line tool:

On the target Intel NUC, run the command line: **BobcatISP.exe -run**