



# **Intel Server Debug and Provisioning Tool**

## ***User Guide***

A setup, usage and troubleshooting guide for Intel® Server Systems

**Rev 1.3-10**

**December 2019**

Intel® Server Products and Solutions

**<This page is intentionally left blank>**

## **Document Revisions**

<b>Date</b>	<b>Revision</b>	<b>Changes</b>
January 2019	1.3-6	N/A
May 2019	1.3-7	Version update
June 2019	1.3-8	<ul style="list-style-type: none"> <li>• S9200WK support added</li> <li>• Disablelan bug fix</li> </ul>
September 2019	1.3-9	<ul style="list-style-type: none"> <li>• Ubuntu support added</li> <li>• Supportedupdates output redirection to logfile</li> <li>• Vmedia –no_user_interaction on certain platforms will give error</li> <li>• Getbiosoption and deployoptions will parse output for errors and return appropriate error code</li> <li>• KCS Policy related changes Intel(R) Server Board (Intel(R) Xeon(R) Platinum 9200 Processor Family)</li> </ul>
September 2019	1.3-10	<ul style="list-style-type: none"> <li>• KCS Policy related changes Intel(R) Server Board S2600 series</li> <li>• kvm launch to work in all KCS modes</li> </ul>

## ***Disclaimers***

Intel technologies' features and benefits depend on system configuration and may require enabled hardware, software, or service activation. Performance varies depending on system configuration. No computer system can be absolutely secure. Check with your system manufacturer or retailer or learn more at [intel.com](http://intel.com).

You may not use or facilitate the use of this document in connection with any infringement or other legal analysis concerning Intel products described herein. You agree to grant Intel a non-exclusive, royalty-free license to any patent claim thereafter drafted which includes subject matter disclosed herein.

No license (express or implied, by estoppel or otherwise) to any intellectual property rights is granted by this document.

The products described may contain design defects or errors known as errata which may cause the product to deviate from published specifications. Current characterized errata are available on request.

Intel disclaims all express and implied warranties, including without limitation, the implied warranties of merchantability, fitness for a particular purpose, and non-infringement, as well as any warranty arising from course of performance, course of dealing, or usage in trade.

This document contains information on products, services and/or processes in development. All information provided here is subject to change without notice. Contact your Intel representative to obtain the latest Intel product specifications.

Copies of documents which have an order number and are referenced in this document may be obtained by calling 1-800-548-4725 or by visiting [www.intel.com/design/literature.htm](http://www.intel.com/design/literature.htm).

Intel, the Intel logo, are trademarks of Intel Corporation or its subsidiaries in the U.S. and/or other countries.

\*Other names and brands may be claimed as the property of others.

Copyright © 2019 Intel Corporation. All rights reserved. Intel Corporation, 2200 Mission College Blvd., Santa Clara, CA 95052-8119, USA.

## **Table of Contents**

<b>1. Introduction</b>	<b>9</b>
1.1 Document Scope	9
1.2 System Requirements	9
1.3 Terminology	10
1.4 Related Documents	10
1.5 Intel® Support	10
<b>2. Get Started</b>	<b>11</b>
2.1 Prerequisites for Installation	11
2.1.1 Prerequisite Packages	11
2.2 Installation Steps	11
2.3 Uninstallation Steps	12
2.4 Update Steps	12
2.5 Intel® Data Center Manager	12
2.5.1 SDPTool Configuration File	13
2.5.2 Adding a Platform for an SUP Update	13
2.5.3 Adding a Platform for a Custom Update	14
2.5.4 Sudoers	14
2.6 User Privileges	14
2.7 Network ports	15
<b>3. Feature Script</b>	<b>16</b>
3.1 General Rules	16
3.2 Update Firmware	16
3.2.1 SUP Folder Based	16
3.2.2 Config File Based	17
3.3 Custom Deploy	17
3.3.1 Custom Folder based	17
3.3.2 Config File based	17
3.4 Set Options	18
3.5 Deploy Options	18
3.6 Get Bios Options	18
3.7 Get INI	19
3.8 KVM	19
3.9 Vmedia	19
3.10 IPMI	19
3.11 Power	19
3.12 Sensor	19
3.13 SEL	20
3.14 Set LAN	20
3.15 Disable LAN	20
3.16 Set LAN IPV6	20

3.17	Disable LAN IPV6.....	20
3.18	LAN Fail Over .....	20
3.19	Node Position .....	20
3.20	System Info.....	21
3.21	FRU .....	21
3.22	Memory Info .....	21
3.23	CPU Info .....	21
3.24	Memory Temperature .....	21
3.25	Power Statistics.....	21
3.26	Set LAN DHCP.....	21
3.27	Set LAN DHCP IPV6.....	22
3.28	Set LAN Stateless ICMPV6 .....	22
3.29	Debug Log .....	22
3.30	Supported Updates.....	22
3.31	Unmount.....	22
<b>4.</b>	<b>custom_deploy.....</b>	<b>23</b>
<b>5.</b>	<b>Troubleshooting Tips .....</b>	<b>24</b>
5.1	SSH Command Sudo Error.....	24
5.2	Tar Time Stamp Messages .....	24
5.3	Kvm launch glibc version error (SLES 11.4-64bit) .....	25
5.4	Reboot features OOB unable to start on S2600WT/ S2600KP/ S2600TP/S2600CW family (SLES11.4-64bit) .....	25
5.5	Multithread issue (RHEL 6.8-64bit).....	26
5.6	Soft-reset issue (SLES 11.4-64bit).....	26
5.7	Java version required (Java 1.7) .....	26
<b>6.</b>	<b>Error Codes .....</b>	<b>27</b>
<b>7.</b>	<b>Reboot features list.....</b>	<b>30</b>

## ***List of Tables***

Table 1. Operating systems and Intel® Server Boards supported .....	9
Table 2. Terminology.....	10
Table 3. Error codes.....	27
Table 4. Reboot features list .....	30

## ***Table of Figures***

Figure 1: Proxy settings in a browser (ex. Mozilla* Firefox) .....	12
Figure 2: FRU print details .....	14
Figure 3: SSH command error.....	24
Figure 4: Tar timestamp messages .....	24
Figure 5: KVM launch.....	25
Figure 6: Reboot features OOB.....	25
Figure 7: Soft reset issue .....	26
Figure 8: Java version.....	26



# 1. Introduction

---

The Intel® Server Debug and Provisioning Tool (Intel® SDP Tool) is a single-server tool to debug and provision Intel® Server Boards and Systems through the BMC Out-of-band.

Intel® SDPTool is designed to work with the following Intel® Server Board families:

- Intel® Server Board S2600WF/S2600WFR family
- Intel® Server Board S2600ST/S2600STR family
- Intel® Server Board S2600BP/S2600BPR family
- Intel® Server Board S9200WK family

## 1.1 Document Scope

The purpose of this user guide is to help system/server administrators install and use the Intel® Server Debug and Provisioning Tool (Intel® SDP Tool). This guide provides information on the features and benefits of Intel® SDP Tool, as well as software requirements, supported operating systems and platforms. This guide also explains the installation and uninstallation process.

---

**Note:** Refer to the *Intel® Server Debug and Provisioning Tool Release Notes* for known issues on platforms and during the installation.

---

## 1.2 System Requirements

**Table 1. Operating systems and Intel® Server Boards supported**

Intel® Server Boards	Operating System Version
<ul style="list-style-type: none"> <li>• Intel® Server Board S2600WF/S2600WFR family</li> <li>• Intel® Server Board S2600ST/S2600STR family</li> <li>• Intel® Server Board S2600BP/S2600BPR family</li> <li>• Intel® Server Board S9200WK family</li> </ul>	<ul style="list-style-type: none"> <li>• Red Hat* Enterprise Linux 6.8-64bit, 7.3, 7.5 and 7.6</li> <li>• SuSE* Linux* Enterprise Server 11 Service Pack 4-64bit, 12 Service Pack 3 and 15</li> <li>• CentOS 7.3, 7.5 and 6.8</li> <li>• Ubuntu 18.04 LTS</li> </ul>

## 1.3 Terminology

**Table 2. Terminology**

Term	Definition
<b>BMC</b>	Baseboard Management Controller
<b>CLI</b>	Command-Line Interface
<b>FRU</b>	Field Replaceable Unit
<b>IPMI</b>	Intelligent Platform Management Interface. Operates independently of the operating system (OS) and allows you to manage a system remotely, even in the absence of the OS.
<b>LAN</b>	Local Area Network
<b>Management Server</b>	Intel® Server System where SDPTool is installed. It will be acting as host server which has network connectivity to the rest of the managed servers.
<b>Managed Server</b>	Intel® Server System in a cluster or data center that will be managed by Management Server.
<b>OUT-OF-BAND</b>	Out-of-band managed server refers to any system which is configured with valid IPMI lan channel and logon account to allow remote management via IPMI protocol.
<b>SDR</b>	Sensor Data Record
<b>SEL</b>	System Event Log

## 1.4 Related Documents

*IPMI-Intelligent Platform Management Interface Specification, 2<sup>nd</sup> Generation, v2.0* (available here: <http://www.intel.com/content/www/us/en/servers/ipmi/ipmi-second-gen-interface-spec-v2-rev1-1.html>)

## 1.5 Intel® Support

Visit <https://www.intel.com/content/www/us/en/support.html> for current technical support information and updates.

## 2. Get Started

---

### 2.1 Prerequisites for Installation

The following tools must be installed prior to the installation of the Intel® SDP Tool to ensure proper functionality. The Intel® SDP Tool is a RPM based package and will fail to install if the following prerequisites are not met. These prerequisites are included with the standard distribution CD/DVD or .iso.

#### 2.1.1 Prerequisite Packages

The following application packages are required for installing the Intel® SDP Tool:

- Python\* 2.7.5, Python 2.6.9
- Ipmitool\* 1.8.18
- Curl\* 7.29.0
- Openssl\* 1.0.0x above
- Wget\* 1.16 above
- Python-requests
- Java\* OpenJDK/Oracle\* version 1.7 and above, 64bit
- Icedtea\*-web
- OpenIPMI\* drivers

### 2.2 Installation Steps

To install the Intel® SDP Tool on the Management Server

1. Download or Copy the Intel® SDPTool Package 'SDPTool-x.y-z.tar.gz' to the target directory.
2. Untar the tar.gz file.

```
Prompt #> tar -xvzmf SDPTool-x.y-z.tar.gz
```

3. Go to untarred 'SDPTool-x.y-z' directory folder. Run sdptool\_install.sh to install the package, example below :-

```
Prompt #> cd <path/to/SDPTool-x.y-z>
```

```
Prompt #> ./sdptool_install.sh
```

If an older version is present, uninstall it first by using the command below:

```
Prompt #> ./sdptool_uninstall.sh
```

Or use the update script:

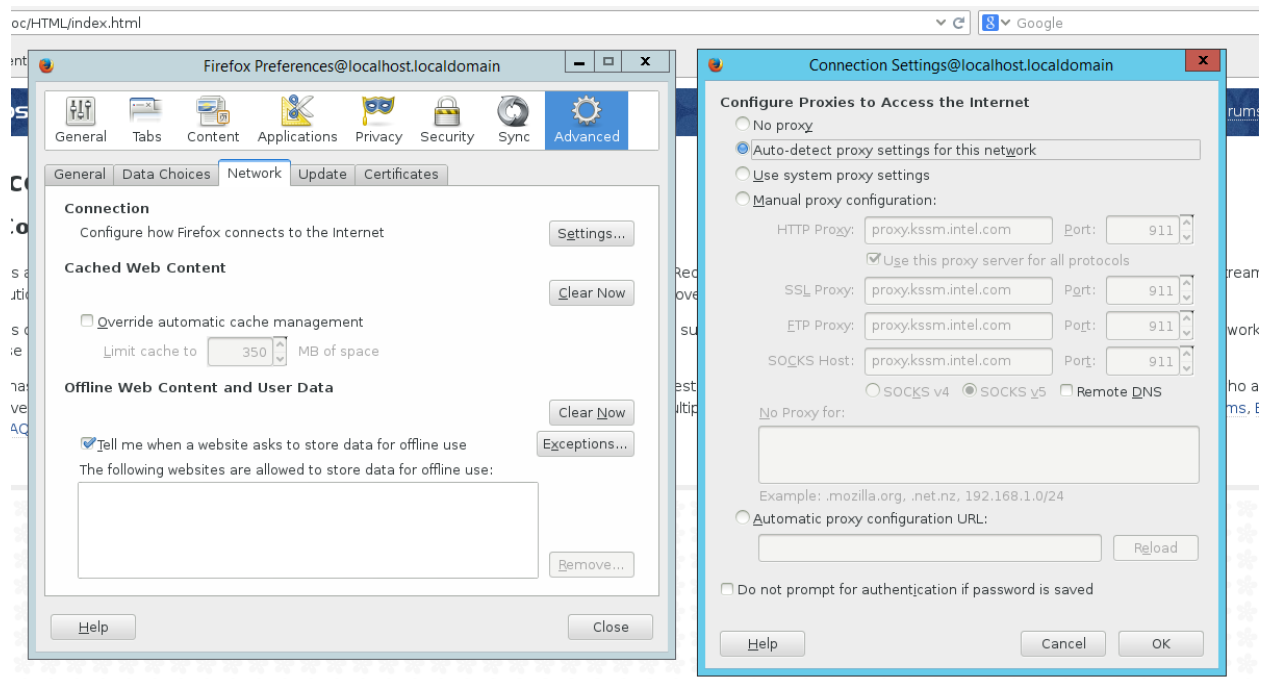
```
Prompt #> ./sdptool_update.sh
```

4. Configure the proper proxy settings using a web browser, using the below example from Mozilla\* Firefox.

---

**Note:** Start the Firefox browser > setting > advance > network settings > select auto-detect proxy settings for this network (\* This step is only required for launching KVM)

---



**Figure 1: Proxy settings in a browser (ex. Mozilla\* Firefox)**

## 2.3 Uninstallation Steps

To uninstall the package, enter the following commands:

```
Prompt #> tar -xvzmf SDPTool-x.y-z.tar.gz
Prompt #> cd <path/to/sdptool-x.y-z>
Prompt #> ./sdptool_uninstall.sh
```

## 2.4 Update Steps

To update the package, enter the following commands:

```
Prompt #> tar -xvzmf SDPTool-x.y-z.tar.gz
Prompt #> cd <path/to/sdptool-x.y-z>
Prompt #> ./sdptool_update.sh
```

## 2.5 Intel® Data Center Manager

Intel® Data Center Manager is a management data center solution stack providing accurate real-time monitoring (thermal and power), management and platform update (BIOS, BMC, etc.) capabilities on Intel® Server Boards & Systems. For more information and a feature list of the Intel® Data Center Manager, refer to the Intel® DCM user guide that comes with the download of the tool.

To support Intel® Data Center Manager, SDPTool provides the following capabilities from an XML based configuration file.

### 2.5.1 SDPTool Configuration File

The SDPTool configuration file is an XML file containing the following tags with no pre-defined (default) location for the file, passed as a command argument:

- Configuration
- SUP\_Folders
- Custom\_Folders
- FRU\_Field

The following sample configuration file passed to the Intel® SDPTool provides the locations of various SUP and Custom folders that a user can provide instead of providing them in the command line.

```
<Configuration>
  <SUP_Folders>
    <S2600BPB>/path/to/SUP_folder</S2600BPB>
  </SUP_Folders>
  <Custom_Folders>
    <FRUField>Board Product</FRUField>
    <S2600BPB>/path/to/Custom_folder</S2600BPB>
  </Custom_Folders>
</Configuration>
```

---

**Note:** SUP is a platform update package provided by Intel®. The SUP is usually distributed as a .zip file, unzipping the .zip will yield the SUP Folder. The SUP package contains the required scripts and images/binaries that will be run in the efi shell to perform the necessary updates of the platform.

**Note:** The Custom Folder is a user defined folder. Users are able to write their own script that will run in the efi shell. Refer to Section 4 for more details

---

### 2.5.2 Adding a Platform for an SUP Update

To add different platforms for an SUP based update, add the following line:

```
<Configuration>
  <SUP_Folders>
    <S2600BPB>/path/to/SUP_folder</S2600BPB>
    <S2600WFP>/path/to/SUP_folder_of_wolfpass</S2600WFP>
  </SUP_Folders>
  <Custom_Folders>
    <FRUField>Board Product</FRUField>
    <S2600BPB>/path/to/Custom_folder</S2600BPB>
  </Custom_Folders>
</Configuration>
```

---

**Note:** S2600WFP is the “Board Product” value in the FRU field of the platform.

---

### 2.5.3 Adding a Platform for a Custom Update

To add a different platform for the custom update feature, add the following line:

```
<Configuration>
  <SUP_Folders>
    <S2600BPB>/path/to/SUP_folder</S2600BPB>
  </SUP_Folders>
  <Custom_Folders>
    <FRUField>Board Product</FRUField>
    <S2600BPB>/path/to/Custom_folder</S2600BPB>
    <S2600WFP>/path/to/SUP_folder_of_wolfpass</S2600WFP>
  </Custom_Folders>
</Configuration>
```

---

**Note:** S2600WFP is the “Board Product” value in the FRU field of the platform.

---

1. The tags are case sensitive.
2. The value for the FRU\_Field can be obtained from one of the left columns of the fru print output. Corresponding values in the right column will form the next tag. In the above example, the FRU\_Field is a “Board Product”, with the value being “S2600BPB”. The fru fields can be obtained by using the command in Section 3.21, with the following sample output:

```
FRU Device Description : Builtin FRU Device (ID 0)
Chassis Type          :
Chassis Part Number   :
Chassis Serial        :
Chassis Extra         :
Chassis Extra         :
Board Mfg Date        :
Board Mfg              :
Board Product         :
Board Serial          :
Board Part Number     :
Product Manufacturer  :
Product Name          :
Product Part Number   :
Product Version       :
Product Serial        :
Product Asset Tag     :
```

**Figure 2: FRU print details**

### 2.5.4 Sudoers

Add the DCM user to the sudoers list. SDPTool will work only as the root or if the user is part of the sudoers list.

```
#> visudo
```

Add the following line in the file

```
<DCM_USERNAME>          ALL=(ALL)          /usr/bin/SDPTool
```

## 2.6 User Privileges

The IPMI interface is used for most commands. The Intel® SDPTool requires the user to have administrative privileges, otherwise the commands will return an error with a message to check the user’s credentials and privileges.

## 2.7 Network ports

The following network ports are used by the SDPTool for connecting to the platform:

1. Ping: No TCP port is used, but ICMP packets needs to be allowed.
2. https: server port outbound '**443**'
3. http: server port outbound '**80**'
4. ipmi: server port outbound '**623**' and '**627**'
5. kvm: server port '**5902**' and '**7578**'
6. vmedia: server port '**5123**'

---

**Note:** The Intel® SDPTool may use a combination of these ports to complete an operation.

---

## 3. Feature Script

---

The Intel® SDPTool script is the main engine of Intel® SDPTool OOB features. This section explains the methods to executing Intel® SDPTool features, and the objectives accomplished by executing them.

### 3.1 General Rules

To display the usage menu, enter `-h`.

Example: `SDPTool -h`

Each valid operation run will create logs in `./Logfiles/<ip>/<operation>`

Example: after running “`SDPTool 192.168.1.10 bmcuser bmcpw powerstatistics`”

There are log(s) in `/usr/local/log/SDPTool/Logfiles/192_168_1_10/powerstatistics.log`

Any failure will generate a `*.err` log file. The specific definition of each error code is available in Section 6.

For reboot features, only one operation for an IP at any given time is run. Any other operation which requires the execution of a reboot feature on the same IP will respond unexpectedly, interfering with the current operation being performed on the IP. SDPTool restricts the user from running 2 different operations that result in rebooting the same platform.

For example: `SDPTool 192.168.1.10 bmcuser bmcpw getini`

`SDPTool 192.168.1.10 bmcuser bmcpw custom_deploy customdeployfolder/`

---

**Note:** These operations should not be run at the same time, as both will reboot the system and interfere with each other’s operation, and will reboot the managed system.

**Note:** Some of the commands that reboot the platform require the platform to be in the KCS Policy of “**Allow All**” in order for them to work, the tool will error out if the KCS Policy is “**Restricted**” or “**Deny All**”.

**Note:** Refer to the list of commands that perform the reboot of the platform in Section 7. Additionally, users can find the commands that would reboot the platform by running the following prompt#> `SDPTool -h`. This informs the user if the command will reboot the target platform.

---

### 3.2 Update Firmware

There are 2 variants of the update firmware now available:

#### 3.2.1 SUP Folder Based

```
SDPTool <ipv4> <username> <password> update <SUP folder> [-no_user_interaction]
[-softreset]
```

To update the BIOS/ME/BMC/SDR system firmware an SUP package must be used instead of a FSUP package. This feature makes use of flash utilities and images within the SUP package.

- `-no_user_interaction`: flag to reboot the system without prompt.
- `-softreset`: flag to soft reboot the system in case the system is in OS mode.

Example: `SDPTool 192.168.1.10 admin admin123 update SUP/S2600WF`

---

**Note:** `SUP_Folder` – Path to Update Package (SUP) is required and to be provided as argument.

---



### 3.2.2 Config File Based

```
SDPTool <ipv4> <username> <password> update -c <config file>[no_user_interaction]
[-softreset]
```

This option provides the user the ability to provide a config file instead of the SUP folder path. The creation of the config file is covered in the section 2.5. Please refer to this section. The config file will be used to gather the correct SUP folder for the platform.

The other options are same as in section 3.2.1

## 3.3 Custom Deploy

The custom deploy feature is update-based, using a user-defined folder to perform the action the user desires instead of using an Intel® provided SUP. Custom deploy can be used to perform various custom updates which include, but are not limited to, firmware updates to OEM parts (SSD, NIC, HBA, etc.). Section 4 contains further information detailing the creation of a custom deployment folder and the scripts associated with the custom deploy folder.

### 3.3.1 Custom Folder based

```
SDPTool <ipv4> <username> <password> custom_deploy <folder name which containing
deploy.nsh> <"argument(s) for deploy.nsh"> [-no_user_interaction] [-softreset]
```

To deploy a user customized script, the customized script must start from the deploy.nsh script.

---

**Note:** A reboot is required for this option, clearing the EFI mailbox.

---

- `deploy_result.log`: the output from `deploy.nsh` can be redirected to this filename; the file will be saved to `Logfiles/ip` folder and content will be displayed to terminal after `custom_deploy` script with extra argument(s) being executed
- `deploy_details.log`: the details from `deploy.nsh` can be redirected to this filename; the file will be saved to `Logfiles/ip` folder after `custom_deploy` script with extra argument(s) being executed
- `-no_user_interaction`: flag to reboot the system without prompt.
- `-softreset`: flag to soft reboot the system in case the system is in OS mode.

Example: `SDPTool 192.168.1.10 admin admin123 custom_deploy folder_with_nsh_file`

Example: `SDPTool 192.168.1.10 admin admin123 custom_deploy folder_with_nsh_file "argument1 argument2 argument3"`

### 3.3.2 Config File based

```
SDPTool <ipv4> <username> <password> update -c <config file> [-
no_user_interaction] [-softreset] --all
```

This option provides the user the facility to provide a config file instead of the `custom_folder` path. The creation of the config file is covered in the section 2.5. Please refer to this section. The config file will be used to gather the correct Custom folder for the platform.

`--all`

Use this option to perform a custom update. The `custom_folder` details are taken from the config file provided as the command argument to perform the custom update.

---

**Note:** The command used is "update" and not "custom\_deploy", unlike in Section 3.3.1. The `--all` option is necessary to perform the custom update, otherwise the update command will perform a SUP based platform update.

---

### 3.4 Set Options

```
SDPTool <ipv4> <username> <password> setoptions <"syscfg arguments"> [-no_user_interaction] [-softreset]
```

This option configures BIOS/BMC settings by executing syscfg command line arguments. Refer to the syscfg user guide for specific syscfg command line arguments.

---

**Note:** A reboot is required for this option, clearing the EFI mailbox.

---

- -no\_user\_interaction: flag to reboot the system without prompt.
- -softreset: flag to soft reboot the system in case the system is in OS mode.

Example: SDPTool 192.168.1.10 admin admin123 setoptions /i

### 3.5 Deploy Options

```
SDPTool <ipv4> <username> <password> deployoptions <restore filename> [-no_user_interaction] [-softreset]
```

This option configures BIOS/BMC settings by using the syscfg ini method. Once the .ini file is provided, the user may change many of the BIOS options and set them within one command.

---

**Note:** A reboot is required for this option, clearing the EFI mailbox.

---

- -no\_user\_interaction: flag to reboot the system without prompt.
- -softreset: flag to soft reboot the system in case the system is in OS mode.

Example: SDPTool 192.168.1.10 admin admin123 deployoptions sysconfig.ini

### 3.6 Get Bios Options

```
SDPTool <ipv4> <username> <password> getbiosoptions <"option to retrieve"> [-no_user_interaction] [-softreset]
```

This option returns the value of a specific bios setting that is supported by the syscfg utility. Refer to the syscfg user guide for specific syscfg command line arguments.

---

**Note:** A reboot is required for this option, clearing the EFI mailbox.

---

- -no\_user\_interaction: flag to reboot the system without prompt.
- -softreset: flag to soft reboot the system in case the system is in OS mode.

Example: SDPTool 192.168.1.10 admin admin123 getbiosoptions "Quiet Boot"

### 3.7 Get INI

```
SDPTool <ipv4> <username> <password> getini [-no_user_interaction] [-softreset]
```

This command returns BIOS/BMC settings by using the syscfg /save .ini file method.

---

**Note:** A reboot is required for this option, clearing the EFI mailbox.

---

- -no\_user\_interaction: flag to reboot the system without prompt.
- -softreset: flag to soft reboot the system in case the system is in OS mode.

Example: SDPTool 192.168.1.10 admin admin123 getini

### 3.8 KVM

```
SDPTool <ipv4> <username> <password> kvm launch
```

This command launches kvm windows for remote control.

Example: SDPTool 192.168.1.10 admin admin123 kvm launch

### 3.9 Vmedia

```
SDPTool <ipv4> <username> <password> vmedia <IMAGE/ISO> [-no_user_interaction]
```

The VMedia command allows the addition of virtual media in .img/.iso format to the remote machine.

Add the relevant virtual media by redirecting the image/iso file specified.

Example: SDPTool 192.168.1.10 admin admin123 vmedia image.img

```
SDPTool 192.168.1.10 admin admin123 vmedia image.iso
```

### 3.10 IPMI

```
SDPTool <ipv4> <username> <password> ipmi <ipmitool arguments>
```

The ipmi command is followed by arguments allowing the execution of ipmitool supported commands.

Example: SDPTool 192.168.1.10 admin admin123 ipmi lan print 3

### 3.11 Power

```
SDPTool <ipv4> <username> <password> power <status | on | off | cycle | reset>
```

The power command returns and has the ability to set the power status of a server

Example: SDPTool 192.168.1.10 admin admin123 power status

### 3.12 Sensor

```
SDPTool <ipv4> <username> <password> sensor
```

The sensor command displays the relevant sensor information of a server.

Example: SDPTool 192.168.1.10 admin admin123 sensor

### 3.13 SEL

```
SDPTool <ipv4> <username> <password> sel [-f <filename to save sel-log>] [-c] [-w] [-i]
```

This command retrieves the SEL log,

---

**Note:** -i = information, -c = critical, -w = warning #-f = specifies a filename to save the SEL log.

---

Example: SDPTool 192.168.1.10 admin admin123 sel -w -l -f save\_log.txt

### 3.14 Set LAN

```
SDPTool <ipv4/ipv6> <username> <password> setlan <channel> <ipv4> <mask> <gateway> <primary dns> <secondary dns>
```

The setlan command configures the BMC LAN IP ipv4 address of a particular LAN channel.

Example: SDPTool 192.168.1.10 admin admin123 setlan 2 192.168.1.12 255.255.255.0 192.168.1.1 8.8.8.8 0.0.0.0

### 3.15 Disable LAN

```
SDPTool <ipv4/ipv6> <username> <password> disablelan <channel>
```

The disablelan command disables a BMC LAN IP ipv4 address of a particular LAN channel.

Example: SDPTool 192.168.1.10 admin admin123 disablelan 2

### 3.16 Set LAN IPV6

**For the S2600WF/S2600WFR/S2600SW/S2600SWR/S2600BP/S2600BPR families:**

```
SDPTool <ipv4/ipv6> <username> <password> setlanipv6 <channel> <ipv6> <prefix length[32|64|128]> <ipv4/6 gateway> <ipv4/6 primary dns> <ipv4/6 secondary dns>
```

The setlanipv6 command configures the BMC LAN IP ipv6 address of a particular LAN channel.

Example: SDPTool 192.168.1.10 admin admin123 setlanipv6 2 fe80::12 64 192.168.1.1 0.0.0.0 0.0.0.0

### 3.17 Disable LAN IPV6

```
SDPTool <ipv4/ipv6> <username> <password> disablelanipv6 <channel>
```

The disablelanipv6 command disables the BMC ipv6 LAN of a particular LAN channel.

Example: SDPTool 192.168.1.10 admin admin123 disablelanipv6 2

### 3.18 LAN Fail Over

```
SDPTool <ipv4> <username> <password> failover < status | enable | disable>
```

The failover command returns, sets, and disables LAN fail over.

Example: SDPTool 192.168.1.10 admin admin123 failover status

### 3.19 Node Position

```
SDPTool <ipv4> <username> <password> nodeposition
```

The nodeposition command displays node position within a chassis, and only supports a half-width SKU.

---

**Note:** Support is available for select multi-node systems.

---

Example: SDPTool 192.168.1.10 admin admin123 nodeposition

### 3.20 System Info

```
SDPTool <ipv4> <username> <password> systeminfo
```

The systeminfo command displays the system information related to the BMC and baseboard including the BMC version, BIOS version, RMM, etc.

Example: SDPTool 192.168.1.10 admin admin123 systeminfo

### 3.21 FRU

```
SDPTool <ipv4> <username> <password> fru {print | set <param> <value>}
```

The fru command displays any relevant fru information.

Example: SDPTool 192.168.1.10 admin admin123 fru print

To set fru

Example: SDPTool 192.168.1.10 admin admin123 fru set <param> <value>

### 3.22 Memory Info

```
SDPTool <ipv4> <username> <password> memoryinfo
```

The memoryinfo command displays any relevant memory information.

Example: SDPTool 192.168.1.10 admin admin123 memoryinfo

### 3.23 CPU Info

```
SDPTool <ipv4> <username> <password> cpuinfo
```

The cpuinfo command displays any relevant CPU information.

Example: SDPTool 192.168.1.10 admin admin123 cpuinfo

### 3.24 Memory Temperature

```
SDPTool <ipv4> <username> <password> memorytemp
```

The memorytemp command displays the temperature of the system memory.

Example: SDPTool 192.168.1.10 admin admin123 memorytemp

### 3.25 Power Statistics

```
SDPTool <ipv4> <username> <password> powerstatistics
```

The powerstatistic command displays system power statistics.

Example: SDPTool 192.168.1.10 admin admin123 powerstatistics

### 3.26 Set LAN DHCP

```
SDPTool <ipv4/ipv6> <username> <password> setlandhcp <channel>
```

The setlandhcp command sets the BMC LAN ipv4 to the dhcp of a particular LAN channel.

Example: SDPTool 192.168.1.10 admin admin123 setlandhcp 2

### 3.27 Set LAN DHCP IPV6

```
SDPTool <ipv4/ipv6> <username> <password> setlandhcpip6 <channel>
```

The setlandhcpip6 command sets the BMC LAN ipv6 to the dhcp of a particular LAN channel.

Example: SDPTool 192.168.1.10 admin admin123 setlandhcpip6 2

### 3.28 Set LAN Stateless ICMPV6

```
SDPTool <ipv4/ipv6> <username> <password> setlanicmpv6 <channel>
```

The setlanicmpv6 command sets the BMC LAN ipv6 to the stateless ICMP.

---

**Note:** This operation is only supported on the following Intel® product families:

- S9200WK
- 

Example: SDPTool 192.168.1.10 admin admin123 setlanicmpv6 2

### 3.29 Debug Log

```
SDPTool <ipv4> <username> <password> debuglog <filename> [-force]
```

The debuglog command fetches the BMC debug log file in .zip file format

Example: SDPTool 192.168.1.10 admin admin123 debuglog debug\_log.zip

- [-force]: forces the BMC transfer mode to exit when the command is executed.

### 3.30 Supported Updates

```
SDPTool <ipv4> <username> <password> supportedupdates -c <config_file>
```

The supportedupdates command lists the type of updates available with the config file for the remote platform. The result will be one out of following values: None, SUP ONLY, Custom ONLY, Both

### 3.31 Unmount

```
SDPTool <ipv4> <username> <password> unmount <IMAGE/ISO>
```

The unmount command allows the user to unmount or remove media that was mounted to the remote platform using the vmedia command. The image/iso is the full path to the image that was mounted.

---

**Note:** This operation is only supported on the following Intel® product families:

- S2600WF and S2600WFR
  - S2600ST and S2600STR
  - S2600BP and S2600BPR
  - S9200WK
-

## 4. custom\_deploy

---

Custom deploy allows the user to customize or script the actions they want to perform on the platform. The script will run on the efi shell, ensuring that the user can write scripts to perform actions based individual requirements.

When creating a custom package, the user must write a '.nsh' file and name it deploy.nsh. When executing custom\_deploy as described in Section 3.3, the SDPTool will look for the deploy.nsh file within a folder that the user provides as a command-line-argument.

The custom folder provided by the user is used to create an image with certain standard efi applications and remotely mount it onto the platform. The platform then executes the deploy.nsh script to perform the necessary actions and return the results/outputs to the user. While writing the deploy.nsh file, the user can also redirect the output to 2 distinct files from which the SDPTool collects logs:

- deploy\_result.log
- deploy\_details.log

The deploy\_result.log can be used to redirect the success or failure status of a particular action. If the user uses this redirection properly, then all success/failures will be available in this log file as '**custom\_deploy\_result.txt**'.

The deploy\_details.log can have the detailed log of every operation in the deploy.nsh and will be available as '**custom\_deploy\_details.txt**'.

---

**Note:** The output of the deploy.nsh file is also captured in a separate file named '**custom\_deploy\_output.txt**' that will be available with the other logs in the standard location.

**Note:** All log files will available in the standard location that is described in Section 3.1.

---

In the following deploy.nsh file, actions are logged. The deploy.nsh file can be used to perform complicated operations as well and is dependent on the user's requirement.

```
echo "Starting the user custom operation" >> deploy_details.log
ls
echo "listing files : successful" >> deploy_result.log
```

The user can write deploy.nsh scripts to perform firmware updates of various components which include, but are not limited to SDD, HBA, NIC, etc.

---

**Note:** The deploy.nsh file can be used to perform complicated operations and is dependent on the user's individual needs.

**Note:** Since the custom folder is provided as an argument, it will be the only folder used in the image. If any additional binary is needed when calling from the deploy.nsh file, it should be available within the directory.

---

## 5. Troubleshooting Tips

This section lists the possible errors encountered during the use of this product with workarounds to address these errors.

### 5.1 SSH Command Sudo Error

```

root@localhost:/home/user/IntelCLI_Demo
Status: log(s) has been generated in: /home/user/IntelCLI_Demo/Logfiles/10_54_56_155
[root@localhost IntelCLI_Demo]# ssh root@localhost /home/user/IntelCLI.py 10.54.56.155 admin password systeminfo
The authenticity of host 'localhost (:::1)' can't be established.
ECDSA key fingerprint is 4a:b7:b9:10:dc:6b:13:82:1a:a0:86:22:13:89:db:58.
Are you sure you want to continue connecting (yes/no)? yes
Warning: Permanently added 'localhost' (ECDSA) to the list of known hosts.
root@localhost's password:
bash: /home/user/IntelCLI.py: No such file or directory
[root@localhost IntelCLI_Demo]# ssh root@localhost /home/user/IntelCLI_Demo/IntelCLI.py 10.54.56.155 admin password systeminfo
root@localhost's password:
System Information
-----
RMM Key : Installed
BIOS Version : SE5C610.86B.01.01.0020.122820161512
SDR Version : SDR Package 1.14
BMC Version : 10.54.56.155: OEM/OOB Error: sudo: sorry, you must have a tty to run sudo
BMC FW : 1.07
Error: sudo: sorry, you must have a tty to run sudo
Status: log(s) has been generated in: /home/user/IntelCLI_Demo/Logfiles/10_54_56_155
[root@localhost IntelCLI_Demo]#

```

Figure 3: SSH command error

To direct using the ssh command, add arg `-t`.

Example: `ssh -t root@localhost SDPTool 192.168.1.10 admin admin123 powerstatistics`

### 5.2 Tar Time Stamp Messages

```

tar: cmdtoolX64.efi: time stamp 2017-04-12 22:37:02 is 115999883.204964241 s in the future
tar: efifmt.efi: time stamp 2017-04-12 22:37:22 is 115999903.20435322 s in the future
tar: ipmi.efi: time stamp 2017-04-13 17:23:02 is 116067443.203744765 s in the future
tar: mkedk2ramdiskX64.efi: time stamp 2017-04-12 22:37:42 is 115999923.20330491 s in the future
tar: mkramdiskX64.efi: time stamp 2015-02-05 15:55:54 is 47115015.202896016 s in the future
tar: RamDiskDxe.efi: time stamp 2017-04-14 02:56:44 is 116101865.202739364 s in the future
tar: ramdisk.efi: time stamp 2015-02-05 15:55:54 is 47115015.202524166 s in the future
tar: rundeploy.nsh: time stamp 2017-04-18 17:27:00 is 116499681.202410696 s in the future
tar: Startup.nsh: time stamp 2017-04-18 17:22:02 is 116499383.202309794 s in the future
tar: syscfg.efi: time stamp 2017-02-27 21:05:30 is 112192791.201309007 s in the future
tar: syscfg_temp.efi: time stamp 2017-02-27 21:05:32 is 112192793.18213325 s in the future
tar: vmdrive_map: time stamp 2017-03-16 21:53:50 is 113664491.18204245 s in the future

```

Figure 4: Tar timestamp messages

These messages do not harm the system. To avoid seeing these messages, ensure that the date and time of the managed system is correct.



### 5.3 Kvm launch glibc version error (SLES 11.4-64bit)

Update the glibc with the version mentioned (GLIBC\_2.15). The ldd -version command can be used to check the glibc version installed on system.



Figure 5: KVM launch

### 5.4 Reboot features OOB unable to start on S2600WT/ S2600KP/ S2600TP/S2600CW family (SLES11.4-64bit)

```
linux-37iu:/usr/local/SDPTool # ./SDPTool 192.168.11.164 test1 test1 getini
Status: Hard-reset system by default.

This operation requires the system to reset. Proceed (y/n)?y
Status: iso/mountc_192.168.11.164 exists
Status: Starting VMCLI...
Error: Redirection is not started. Exiting.
Status: log(s) has been generated in: /usr/local/SDPTool/Logfiles/192_168_11_164
```

Figure 6: Reboot features OOB

Default openssl and wget version in SLES11.4-64bit is unable to support reboot features on the S2600WT/ S2600KP/ S2600TP/ S2600CW server families. The following steps remove and upgrade openssl and wget on a SLES11.4-64bit management host.

1. Download the openssl source code 1.0.1t: <https://www.openssl.org/source/old/1.0.1/>

2. Remove the existing openssl:

```
rpm -ev --nodeps openssl
```

3. Configure and build:

```
tar -xvf openssl-1.0.1t.tar.gz
```

```
cd openssl-1.0.1t
```

```
./config shared --prefix=/usr --openssldir=/etc/ssl --libdir=/lib
```

```
make && make install
```

4. Download wget source code: wget <http://ftp.gnu.org/gnu/wget/wget-1.15.tar.gz>

5. Remove existing wget:

```
rpm -ev --nodeps wget
```

6. Configure and build:

```
tar -xvf wget-1.15.tar.gz
```

```
cd wget-1.15
```

```
./configure --prefix=/usr --sysconfdir=/etc --with-ssl=openssl
```

```
make && make install
```

## 5.5 Multithread issue (RHEL 6.8-64bit)

RHEL6.8-64bit is set to 1 thread count by default since VMViewer has limited multiple simultaneous thread support.

## 5.6 Soft-reset issue (SLES 11.4-64bit)

```
linux-b93j:/usr/local/IntelCLI # ./IntelCLI 192.168.3.54 test1 test1 getini -softreset
This operation requires the system to reset. Proceed (y/n)?y
Status: Switching off machine: [192.168.3.54]
Error: Error in soft-reset system. Exiting.
Status: log(s) has been generated in: /usr/local/IntelCLI/Logfiles/192_168_3_54
```

Figure 7: Soft reset issue

SLES 11.4-64bit will have a soft-reset issue due to the client OS prompting for a root password before shutting down the system.

Check the client system if the above error appears to ensure it is not blocked by the OS shutdown prompt.

## 5.7 Java version required (Java 1.7)

```
linux-37iu:/usr/local/SDPTool # ./SDPTool 192.168.11.102 test1 test1 kvm launch
Error: Error in getting java on local machine. Please make sure java is installed. Exiting.
Error: Java binary/supported version not found
SDPTool version: 1.00.0006
SDPTool <ipv4> <username> <password> kvm launch
```

Figure 8: Java version

OpenJDK/Oracle\* Java\* version 1.7 onwards will be required in order to run:

- kvm
- update
- customdeploy
- setoptions
- deployoptions
- getbiosoptions
- getini

To check the java version & provider, run:

```
java -version
```

## 6. Error Codes

**Table 3. Error codes**

<b>Error Code</b>	<b>Error Type</b>	<b>Error Description</b>
0	NoError	Success / No failure
1	ENoRMM	RMM module absent
2	ENoIPMI	IPMI module absent
3	ENoFileCreate	Error creating a file
4	ENoRetrieve	Error in retrieving the data
5	ENoProdRetrieve	Error retrieving the Product information
6	ENoSoftReset	Error trying to soft-reset
7	ENoJava	Error Java not present
8	ENoPerm	Error not permitted/ need privileges
9	ENoConnect	Error trying to connect to the system
10	ENoRedirection	Error redirecting the image
11	ENotSupported	Error not supported currently
12	EUnsupportedPlatform	Platform not supported
13	EUnsupportedOperation	Operation not supported
14	ECurrNotSupported	Error currently not supported
15	EMissingFiles	Missing Required files
16	EMissingTags	Missing Required tag in xml
17	EMissingHardware	Missing Required Hardware
18	EMissingArgs	Missing required arguments
19	EMissingTools	Missing Required tools
20	EInterrupt	Process Interrupted
21	EInvalidArgs	Invalid Arguments
22	EInvalidIP	Invalid IP
23	EInvalidChannel	Invalid Channel

24	EInvalidSubnet	Invalid Subnet mask
25	EInvalidFilename	Invalid Filename
26	EInvalidFileExt	Invalid/unexpected file extension
27	EInvalidPath	Invalid path
28	EInvalidSMBIOS	Invalid/unsupported BIOS region
29	EMismatchIPGW	IP address and Gateway are a mismatch
30	EIPMICmdError	Error running IPMI command
31	EIPMICmdTimeout	Error IPMI command timed out
32	EDupVMCLI	VMCLI already running, Duplicate Error
33	EMount	Error mounting / unmounting the image
34	EDataConvr	Error converting data
35	EKVMSessFull	Error launching KVM session is full
36	EUnknown	Unknown error
37	ESetoptionSupport	Error trying to set option
38	EOperationFail	Operation fails or reports error
39	EcurlCmd	Error from curl process
40	ESubprocess	Error invoking the process
41	ECleanupImage	Error cleaning up an Image
42	ETermDefunc	Error terminating a Defunct process
43	ETermSuspend	Error terminating a suspended process
44	EKillCmd	Error trying to kill a command
45	EStartVMCLI	Unable to start VMCLI
46	ETestapp	Testapp hits error
47	ESUPTooLarge	SUP package provided is too large
48	ESetTransMode	Error Setting transfer mode in BMC

<b>49</b>	ESingleFile	Error in single File
<b>50</b>	EFileNotFound	File / path not found
<b>51</b>	ESystemError	System gives error
<b>52</b>	EAbort	Aborted
<b>53</b>	ESysCfg	Error in using SysCfg utility

## 7. Reboot features list

---

Table 4. Reboot features list

Command	Reboot Required
cpuinfo	NO
custom_deploy	YES
debuglog	NO
deployoptions	YES
disablelan	NO
disablelanipv6	NO
failover	NO
fru	NO
getbiosoptions	YES
getini	YES
ipmi	N/A
kvm	NO
memoryinfo	NO
memorytemp	NO
nodeposition	NO
power	NO
powerstatistics	NO
sel	NO
sensor	NO
setlan	NO
setlandhcp	NO
setlandhcpipv6	NO
setlanicmpv6	NO
setlanipv6	NO
setoptions	YES
supportedupdates	NO

<b>systeminfo</b>	NO
<b>unmount</b>	NO
<b>update</b>	YES
<b>vmedia</b>	NO