



Intel® Watchdog Timer Utility

User Guide

Version 1.2
January 5, 2021

INFORMATION IN THIS DOCUMENT IS PROVIDED IN CONNECTION WITH INTEL® PRODUCTS. NO LICENSE, EXPRESS OR IMPLIED, BY ESTOPPEL OR OTHERWISE, TO ANY INTEL® LECTUAL PROPERTY RIGHTS IS GRANTED BY THIS DOCUMENT. EXCEPT AS PROVIDED IN INTEL®'S TERMS AND CONDITIONS OF SALE FOR SUCH PRODUCTS, INTEL® ASSUMES NO LIABILITY WHATSOEVER, AND INTEL® DISCLAIMS ANY EXPRESS OR IMPLIED WARRANTY, RELATING TO SALE AND/OR USE OF INTEL® PRODUCTS INCLUDING LIABILITY OR WARRANTIES RELATING TO FITNESS FOR A PARTICULAR PURPOSE, MERCHANTABILITY, OR INFRINGEMENT OF ANY PATENT, COPYRIGHT OR OTHER INTEL® LECTUAL PROPERTY RIGHT.

UNLESS OTHERWISE AGREED IN WRITING BY INTEL®, THE INTEL® PRODUCTS ARE NOT DESIGNED NOR INTENDED FOR ANY APPLICATION IN WHICH THE FAILURE OF THE INTEL® PRODUCT COULD CREATE A SITUATION WHERE PERSONAL INJURY OR DEATH MAY OCCUR.

Intel® may make changes to specifications and product descriptions at any time, without notice. Designers must not rely on the absence or characteristics of any features or instructions marked "reserved" or "undefined." Intel® reserves these for future definition and shall have no responsibility whatsoever for conflicts or incompatibilities arising from future changes to them. The information here is subject to change without notice. Do not finalize a design with this information.

The products described in this document may contain design defects or errors known as errata which may cause the product to deviate from published specifications. Current characterized errata are available on request.

Contact your local Intel® sales office or your distributor to obtain the latest specifications and before placing your product order.

This document contains information on products in the design phase of development.

All products, platforms, dates, and figures specified are preliminary based on current expectations, and are subject to change without notice. All dates specified are target dates, are provided for planning purposes only and are subject to change.

This document contains information on products in the design phase of development. Do not finalize a design with this information. Revised information will be published when the product is available. Verify with your local sales office that you have the latest datasheet before finalizing a design.

Intel®, Intel® NUC, Intel® Compute Stick, Intel® Compute Card and the Intel® logo are trademarks of Intel® Corporation in the U.S. and other countries.

*Other names and brands may be claimed as the property of others.

Copyright © 2020, Intel® Corporation. All rights reserved.

1 Table of Contents

1	Table of Contents.....	3
	Revision History.....	4
2	Introduction	5
2.1	Overview.....	5
2.2	Supported NUCs.....	5
2.3	Supported OS.....	5
2.4	Supported Browsers.....	5
3	Installation.....	6
3.1	Application Installation.....	6
3.2	Driver Installation	7
3.3	Application Uninstallation.....	10
3.4	Driver Uninstallation.....	10
4	Intel® Watchdog Timer Utility Interface.....	15
4.1	Opening the Intel® Watchdog Timer Utility	15
4.2	Application Interface Terminology Definitions.....	18
5	Monitor Applications	19
5.1	Steps to monitor an application.....	19
5.2	Steps to stop monitoring an application.....	20
5.3	Monitoring options after adding an application	22
6	Advanced Settings.....	24
6.1	Intel® Watchdog Timer Utility Advanced Settings.....	24
7	Errata.....	26
7.1	Known Errata.....	26

Revision History

Revision Number	Description	Revision Date
1.0	Initial release – support for NUC8CCH	October 2019
1.1	Support additional platforms – PN, DN, CB	June 2020
1.2	Support additional platforms – TN, EB, QN	January 2021

2 Introduction

2.1 Overview

The Intel® Watchdog Timer Utility allows an Intel® NUC Mini PC, kit or board to leverage the platform's hardware watchdog timer to monitor if an application is still running. If the monitored application stops responding, the Intel® Watchdog Timer Utility can help resolve this problem by automatically restarting a failed instance of an application, logging the activity for troubleshooting.

2.2 Supported NUCs

- Intel® NUC Kit NUC7i3DN / NUC7i5DN / NUC7i7DN
- Intel® NUC 8 Rugged Kit NUC8CCH
- Intel® NUC 8 Pro Kit NUC8i3PN / NUC8v5PN / NUC8v7PN
- Intel® NUC 8 Compute Element CM8CCB / CM8PCB / CM8i3CB / CM8i5CB / CM8v5CB / CM8i7CB / CM8v7CB
- Intel® NUC 9 Pro NUC9v7QN / NUC9vXQN
- Intel® NUC 11 Pro Kit NUC11TN
- Intel® NUC 11 Compute Element CM11EB

2.3 Supported OS

Windows 10 Enterprise/Pro 64-bit

1. Intel® Watchdog Timer Utility App was validated on Windows 10 version 2004, codename 20H1, build 19041

2.4 Supported Browsers

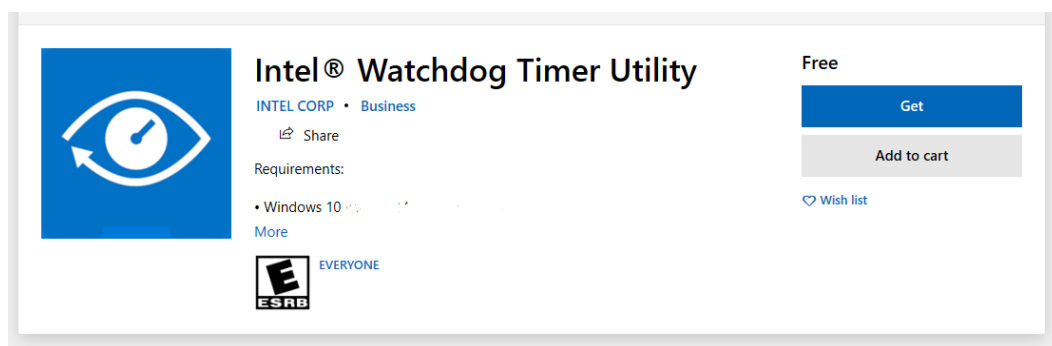
The following browsers are supported for monitoring applications

1. Firefox version 77.01 and later (64-bit)
2. Google Chrome version 83.0.4103.97 and later (64-bit)

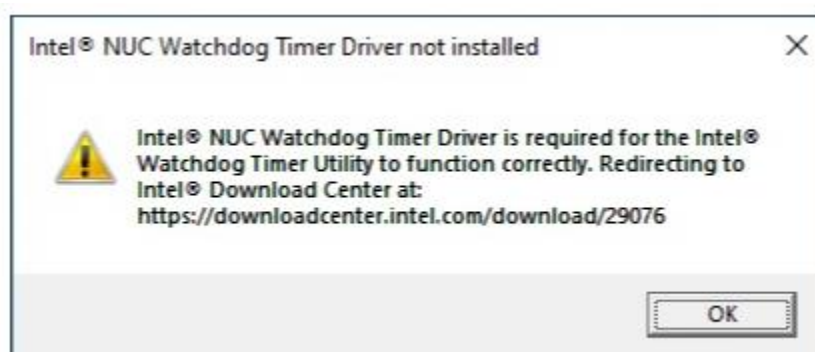
3 Installation

3.1 Application Installation

1. Search for Intel® Watchdog Timer Utility application in the Microsoft Store.
2. Click “Get”

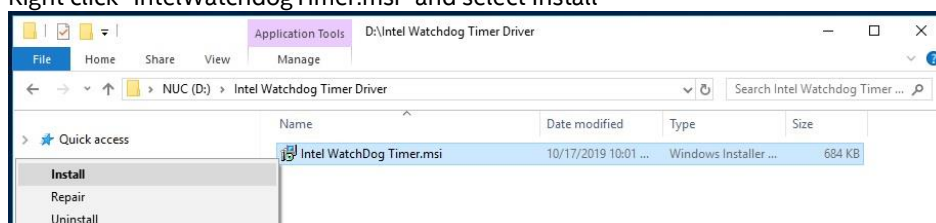


3. After successful installation of the application, you will be prompted to get the Intel® NUC Watchdog Timer Driver from Intel Download Center



3.2 Driver Installation

1. Application installation should redirect you to Intel Download Center to get the Intel® NUC Watchdog Timer Driver. If you are not automatically redirected, follow these steps:
 - i. Go to <https://downloadcenter.intel.com>
 - ii. Search for 'Intel® NUC Watchdog Timer Driver'
 - iii. Click on Download and accept the license agreement
2. Right click "IntelWatchdogTimer.msi" and select Install



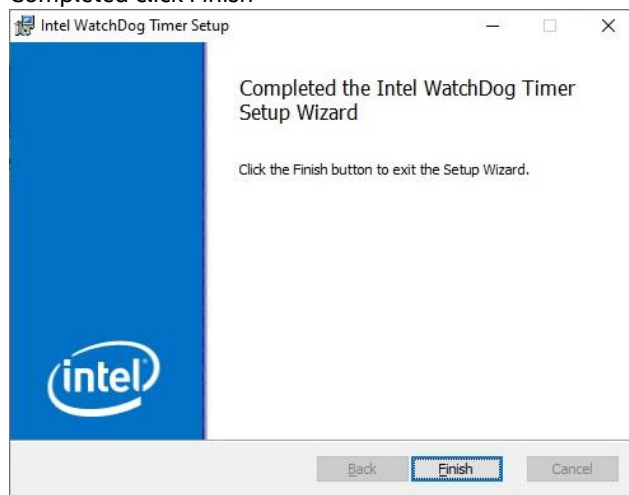
3. Check box I accept the terms and click install



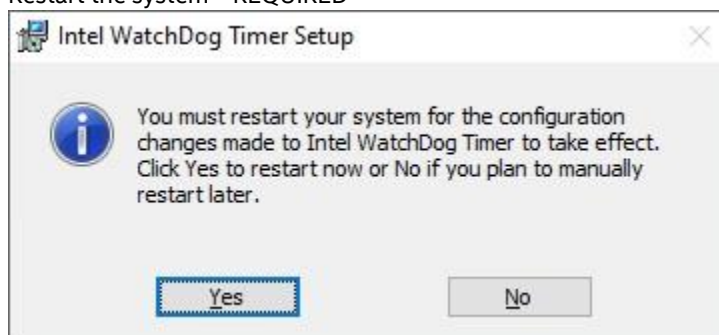
4. User Account Control prompt select YES



5. Completed click Finish

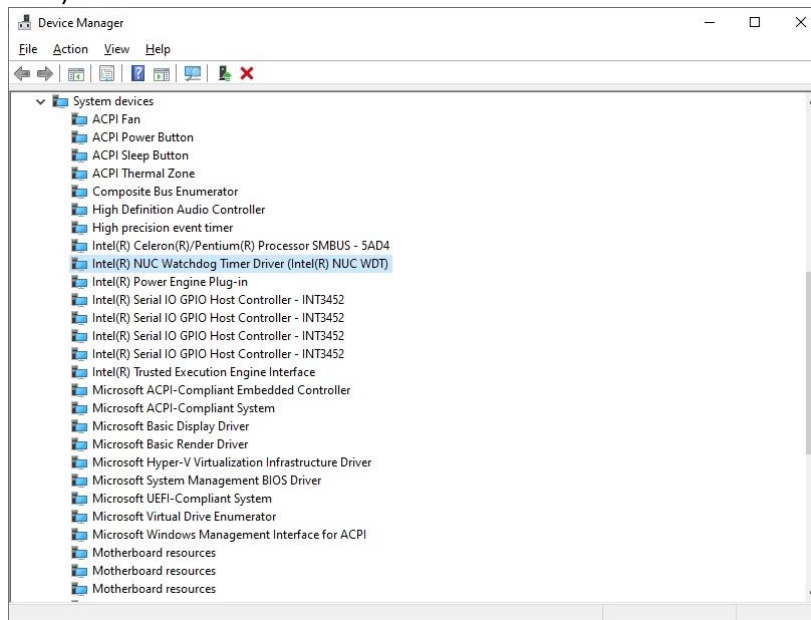


6. Restart the system – REQUIRED

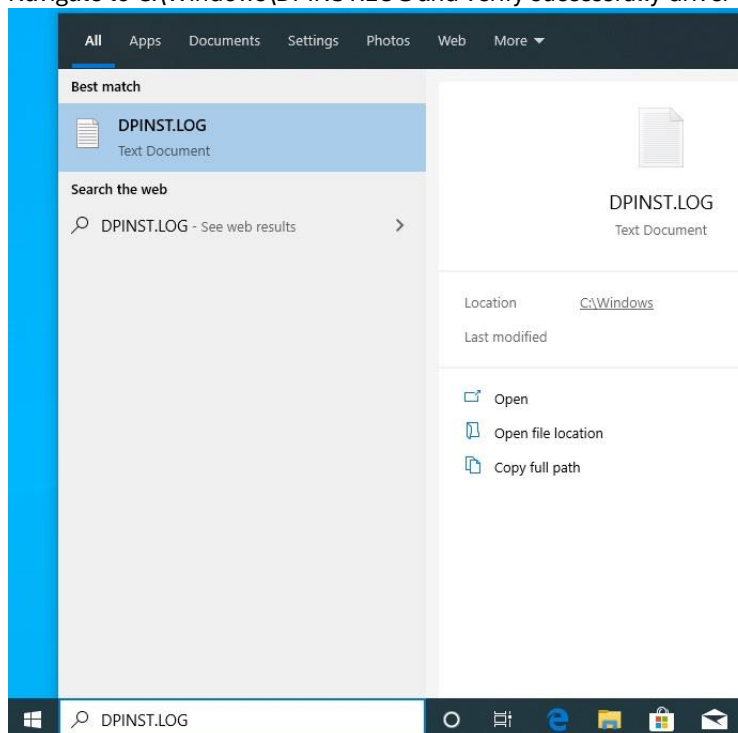


7. How to verify a successful driver install

- i. Go into windows Device Manager > View > select "Show hidden devices". Select System Devices > Intel(R) NUC Watchdog Timer Driver (Intel(R) NUC WDT)



- ii. Navigate to C:\Windows\DPINST.LOG and verify successfully driver installation.

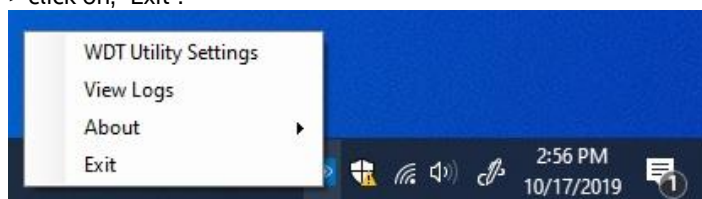


3.3 Application Uninstallation

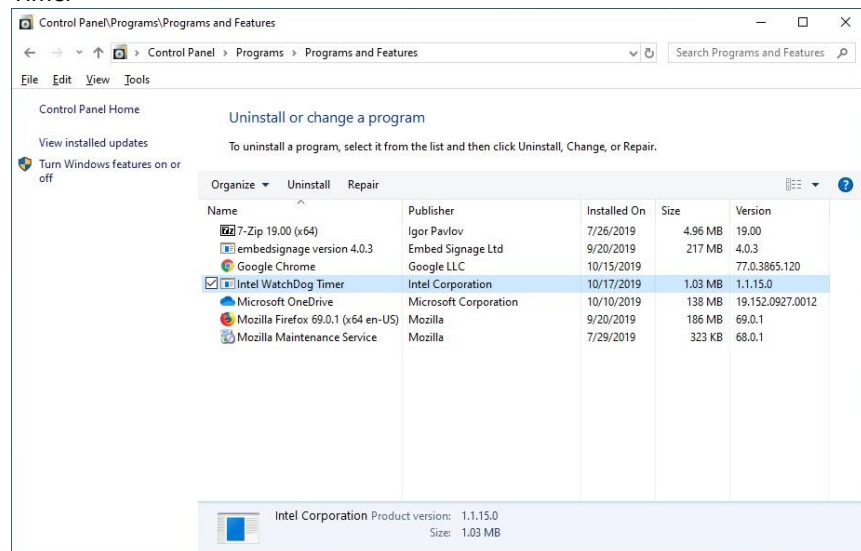
1. Open the Windows Start Menu
2. Right Click on the Intel® Watchdog Timer Utility icon
3. Choose Uninstall

3.4 Driver Uninstallation

1. Method 1: Control Panel
 - i. Right click on the Intel® Watchdog Timer Utility icon in taskbar > click on, "Exit".

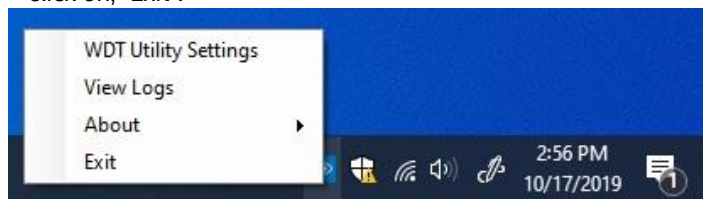


- ii. Open Control Panel > Programs > Uninstall a program > select “Intel Watchdog Timer”

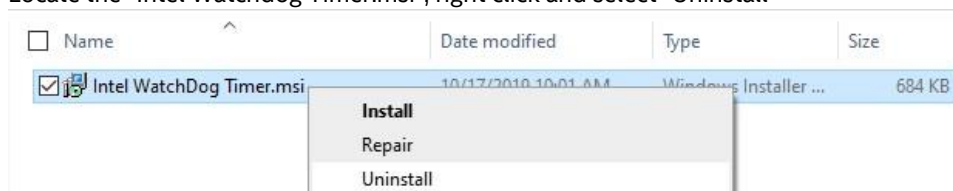


2. Method 2: MSI Uninstall

- i. Right click on the Intel® Watchdog Timer Utility icon in taskbar > click on, "Exit".

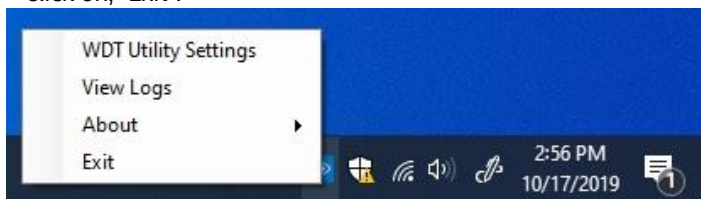


- ii. Locate the "Intel Watchdog Timer.msi", right click and select "Uninstall"

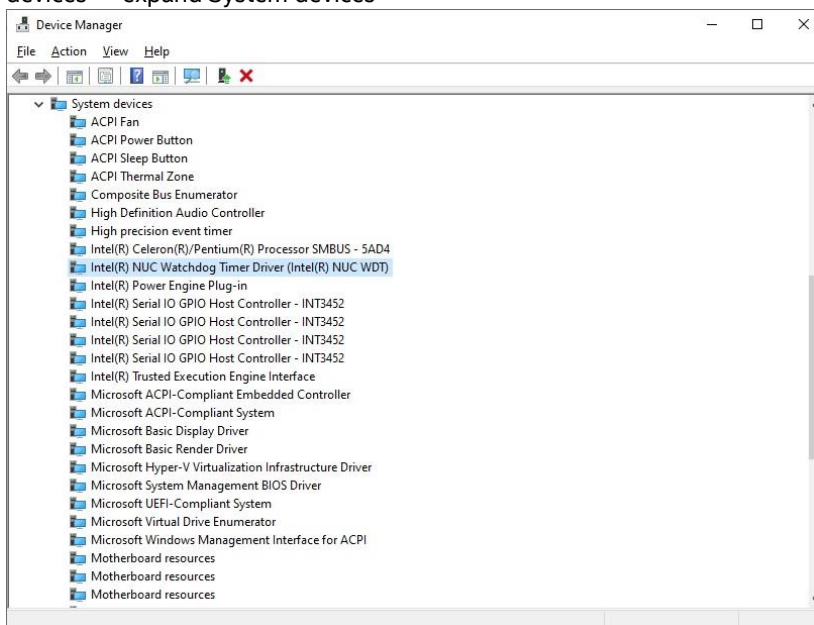


3. Method 3: Manual Uninstall

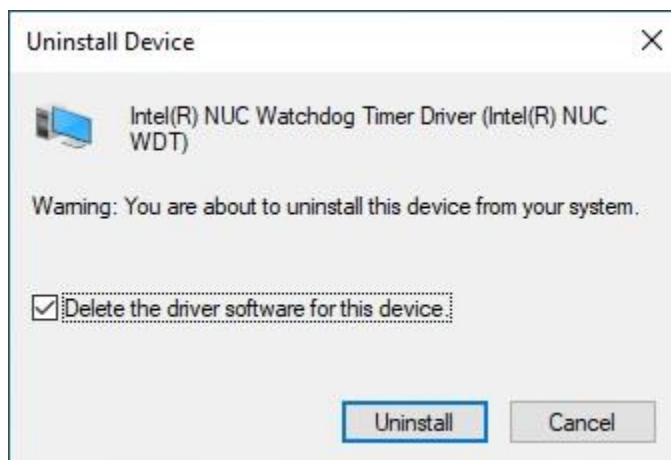
- i. Right click on the Intel® Watchdog Timer Utility icon in taskbar > click on, "Exit".



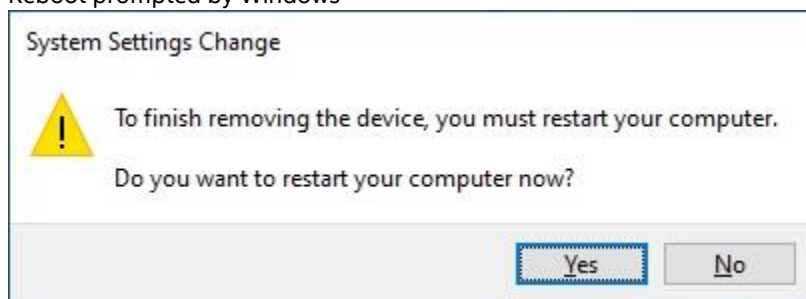
- ii. Open Device Manager > Select "View" drop down menu > select "Show hidden devices" > expand System devices



- iii. Right click on the "Intel(R) NUC Watchdog Timer Driver"
> select "Uninstall"

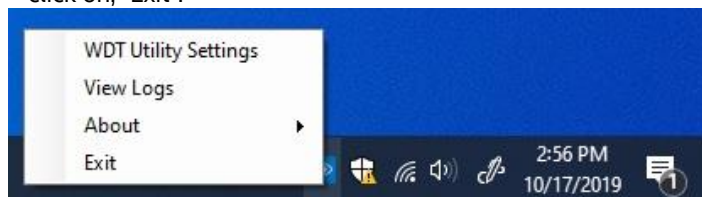


- iv. Reboot prompted by Windows



4. MSI Reinstall-Repair, and MSI Upgrade Uninstall Notes:

- i. Right click on the Intel® Watchdog Timer Utility icon in taskbar
> click on, "Exit".



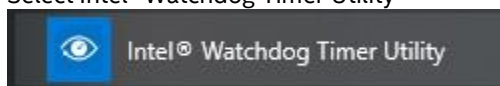
- ii. Reinstalling the driver is supported using the same MSI version without uninstalling, just run the "Intel® Watchdog Driver.msi" and select "Repair" and the driver will reinstall.
- iii. Before upgrading to a new version of the Intel® NUC Watchdog Driver MSI, the currently installed Intel® NUC Watchdog Driver MSI must first be uninstalled through Driver Uninstall Method 1 or 2.

4 Intel® Watchdog Timer Utility Interface

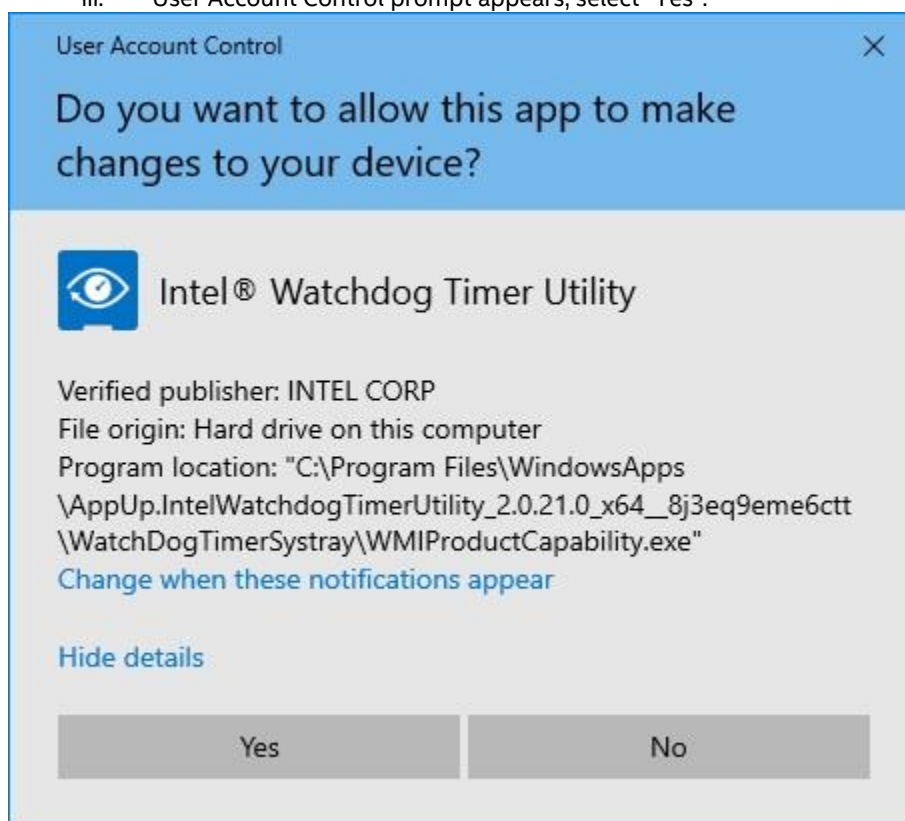
4.1 Opening the Intel® Watchdog Timer Utility

1. First Launch:

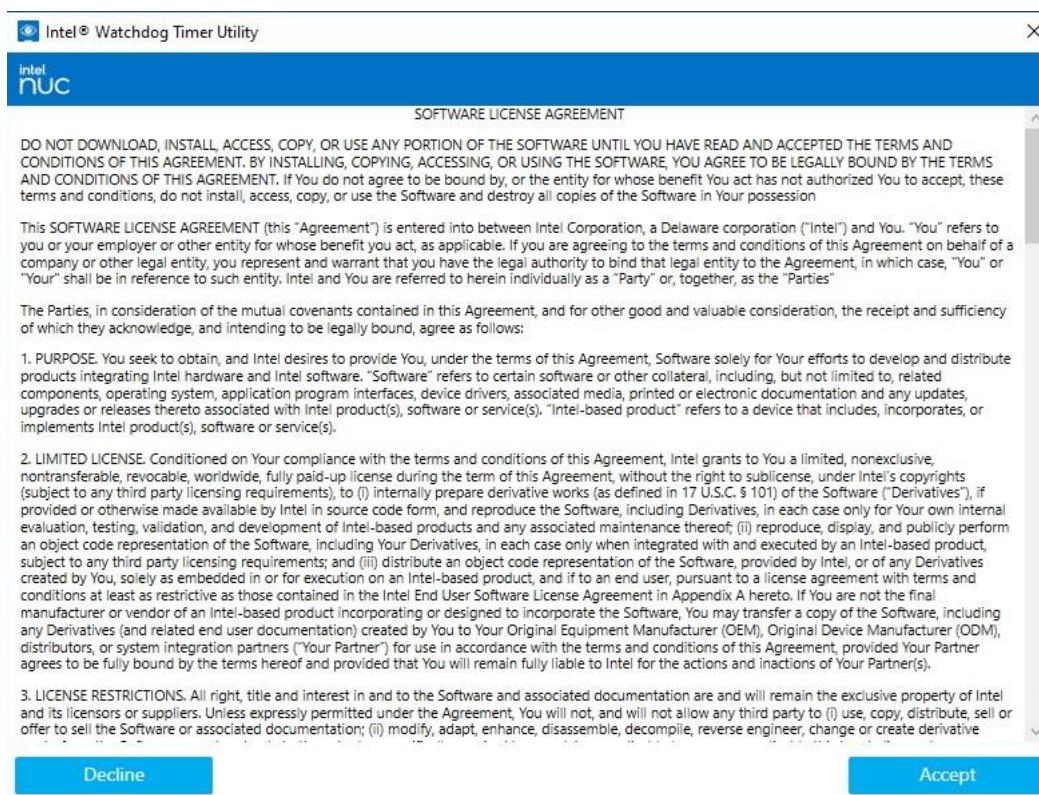
- i. Click on the Windows Start menu icon
- ii. Select Intel® Watchdog Timer Utility



- iii. User Account Control prompt appears, select "Yes".



iv. EULA Notification > Accept



Intel® Watchdog Timer Utility

SOFTWARE LICENSE AGREEMENT

DO NOT DOWNLOAD, INSTALL, ACCESS, COPY, OR USE ANY PORTION OF THE SOFTWARE UNTIL YOU HAVE READ AND ACCEPTED THE TERMS AND CONDITIONS OF THIS AGREEMENT. BY INSTALLING, COPYING, ACCESSING, OR USING THE SOFTWARE, YOU AGREE TO BE LEGALLY BOUND BY THE TERMS AND CONDITIONS OF THIS AGREEMENT. If You do not agree to be bound by, or the entity for whose benefit You act has not authorized You to accept, these terms and conditions, do not install, access, copy, or use the Software and destroy all copies of the Software in Your possession.

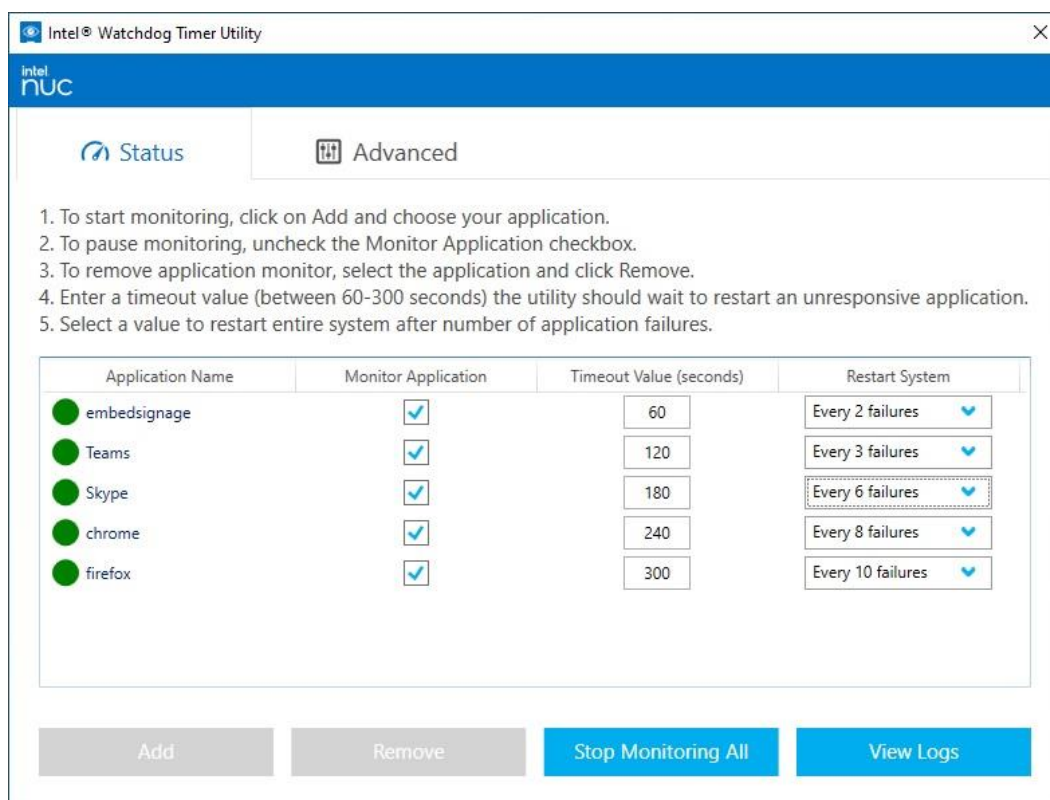
This SOFTWARE LICENSE AGREEMENT (this "Agreement") is entered into between Intel Corporation, a Delaware corporation ("Intel") and You. "You" refers to you or your employer or other entity for whose benefit you act, as applicable. If you are agreeing to the terms and conditions of this Agreement on behalf of a company or other legal entity, you represent and warrant that you have the legal authority to bind that legal entity to the Agreement, in which case, "You" or "Your" shall be in reference to such entity. Intel and You are referred to herein individually as a "Party" or, together, as the "Parties".

The Parties, in consideration of the mutual covenants contained in this Agreement, and for other good and valuable consideration, the receipt and sufficiency of which they acknowledge, and intending to be legally bound, agree as follows:

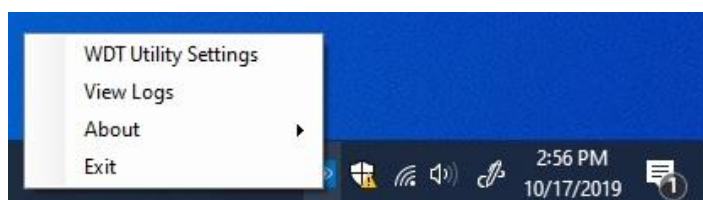
- PURPOSE.** You seek to obtain, and Intel desires to provide You, under the terms of this Agreement, Software solely for Your efforts to develop and distribute products integrating Intel hardware and Intel software. "Software" refers to certain software or other collateral, including, but not limited to, related components, operating system, application program interfaces, device drivers, associated media, printed or electronic documentation and any updates, upgrades or releases thereto associated with Intel product(s), software or service(s). "Intel-based product" refers to a device that includes, incorporates, or implements Intel product(s), software or service(s).
- LIMITED LICENSE.** Conditioned on Your compliance with the terms and conditions of this Agreement, Intel grants to You a limited, nonexclusive, nontransferable, revocable, worldwide, fully paid-up license during the term of this Agreement, without the right to sublicense, under Intel's copyrights (subject to any third party licensing requirements), to (i) internally prepare derivative works (as defined in 17 U.S.C. § 101) of the Software ("Derivatives"), if provided or otherwise made available by Intel in source code form, and reproduce the Software, including Derivatives, in each case only for Your own internal evaluation, testing, validation, and development of Intel-based products and any associated maintenance thereof; (ii) reproduce, display, and publicly perform an object code representation of the Software, including Your Derivatives, in each case only when integrated with and executed by an Intel-based product, subject to any third party licensing requirements; and (iii) distribute an object code representation of the Software, provided by Intel, or of any Derivatives created by You, solely as embedded in or for execution on an Intel-based product, and if to an end user, pursuant to a license agreement with terms and conditions at least as restrictive as those contained in the Intel End User Software License Agreement in Appendix A hereto. If You are not the final manufacturer or vendor of an Intel-based product incorporating or designed to incorporate the Software, You may transfer a copy of the Software, including any Derivatives (and related end user documentation) created by You to Your Original Equipment Manufacturer (OEM), Original Device Manufacturer (ODM), distributors, or system integration partners ("Your Partner") for use in accordance with the terms and conditions of this Agreement, provided Your Partner agrees to be fully bound by the terms hereof and provided that You will remain fully liable to Intel for the actions and inactions of Your Partner(s).
- LICENSE RESTRICTIONS.** All right, title and interest in and to the Software and associated documentation are and will remain the exclusive property of Intel and its licensors or suppliers. Unless expressly permitted under the Agreement, You will not, and will not allow any third party to (i) use, copy, distribute, sell or offer to sell the Software or associated documentation; (ii) modify, adapt, enhance, disassemble, decompile, reverse engineer, change or create derivative

Decline Accept

- v. The Intel® Watchdog Timer Utility Settings Status tab opens



2. After Intel® Watchdog Timer Utility application is launched for the first time, the minimized app is accessible only from the taskbar and not from the Start menu.
- i. Right click on the Intel® Watchdog Timer Utility icon in taskbar > click on, "WDT Utility Settings".



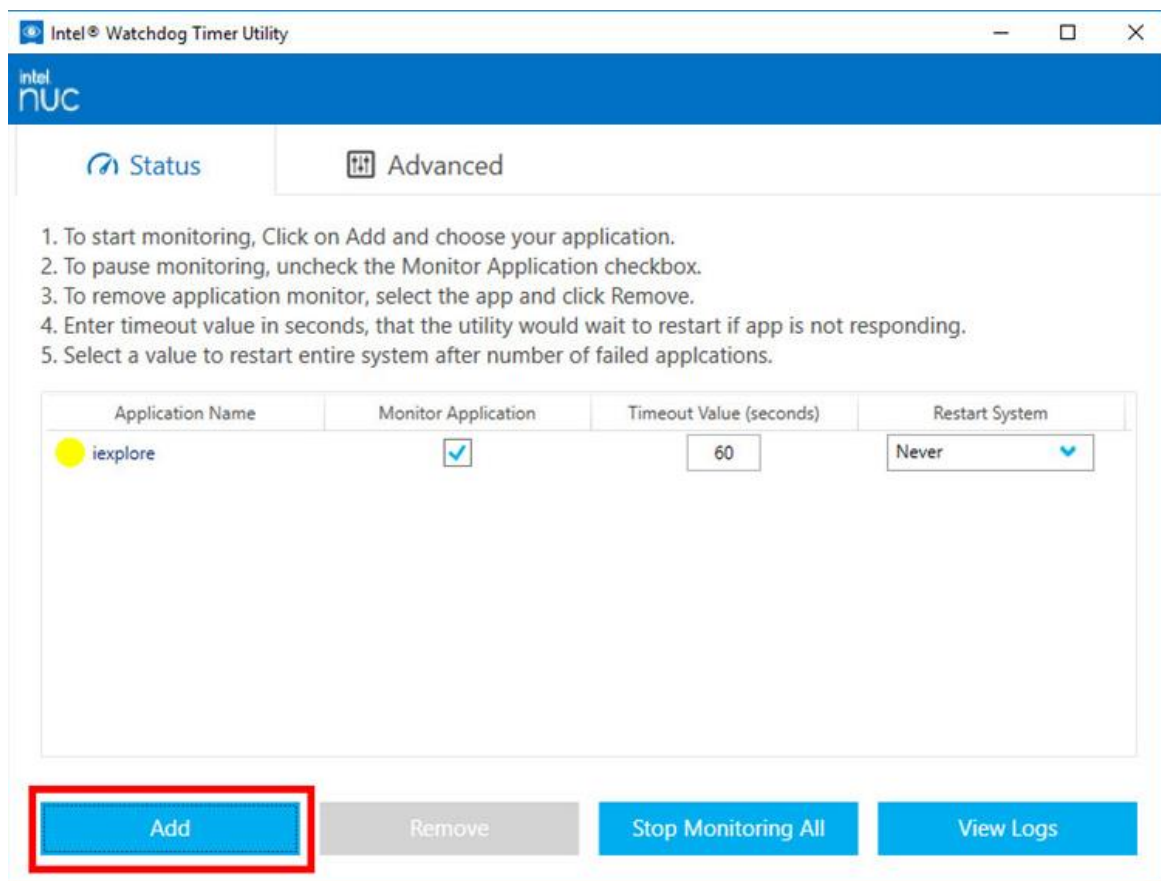
4.2 Application Interface Terminology Definitions

Application Name	Once an application is added, the application name will be displayed in this column.
Monitor Application	<p>A checkbox will appear once an application is added.</p> <p>When the checkbox is checked, it will enable the software to monitor the application selected.</p> <p>When it is unchecked, the software will not monitor the application selected.</p>
Timeout Value (seconds)	<p>The Timeout Value (seconds) is used for when an application stops working properly.</p> <p>For example:</p> <p>The application that is selected stops working or crashes</p> <p>Timeout Value (seconds) set to 60</p> <p>Restart System is set to restart</p> <p>System will restart after 60 seconds of the selected application that has stopped working or crashed</p>
Restart System	This is used to define what happens after the Timeout Value (seconds) is triggered on a specific Application.
Add (Button)	Add an application to the tool to monitor
Remove (Button)	Removes an application that was added to the tool
Start Monitoring (Button)	Starts monitoring all the applications that are checked (under Monitor Application) in the tool
Stop Monitoring All (Button)	Stops monitoring all applications in the tool
View Logs (Button)	View the log of the application selected

5 Monitor Applications

5.1 Steps to monitor an application

1. In the Intel® Watchdog Timer Utility Status window, click Add

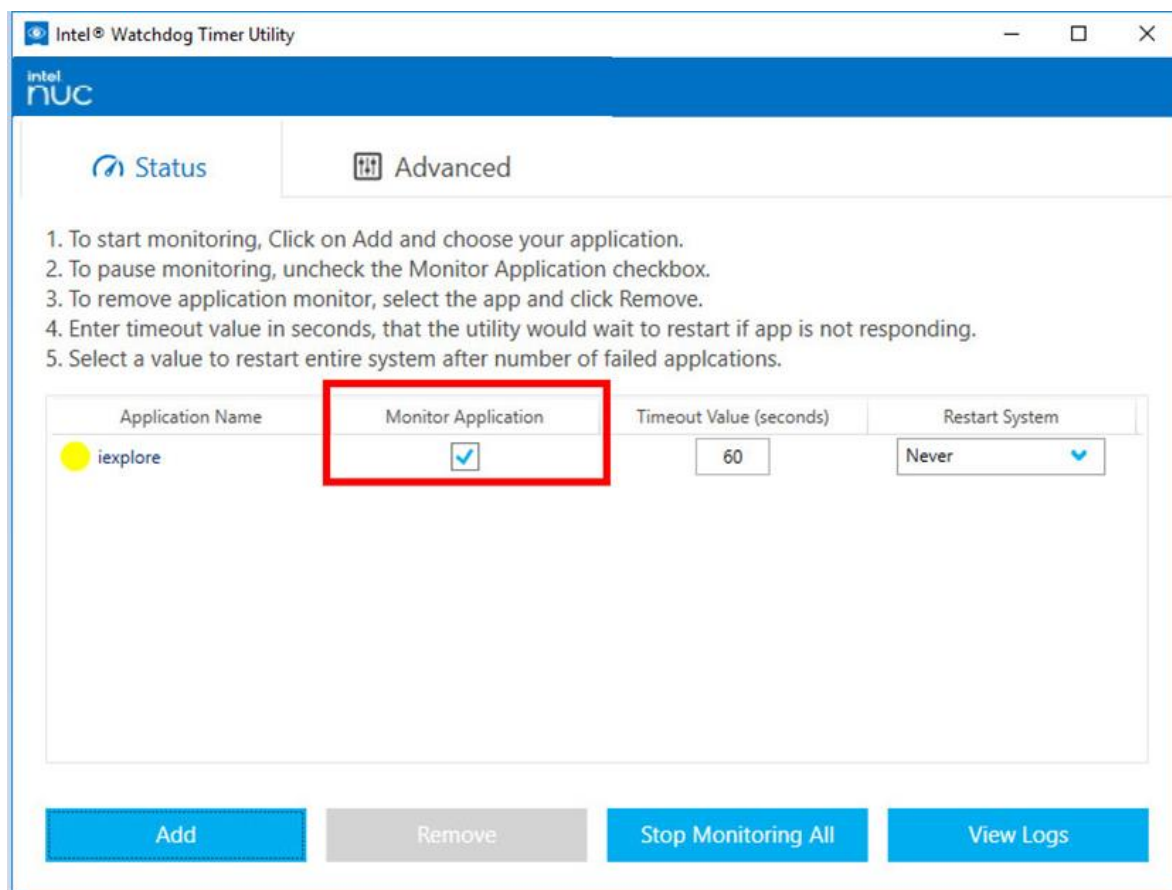


2. Locate the application of the software you'd like to monitor
3. Select the application .EXE > Click Open
4. Monitoring will begin automatically

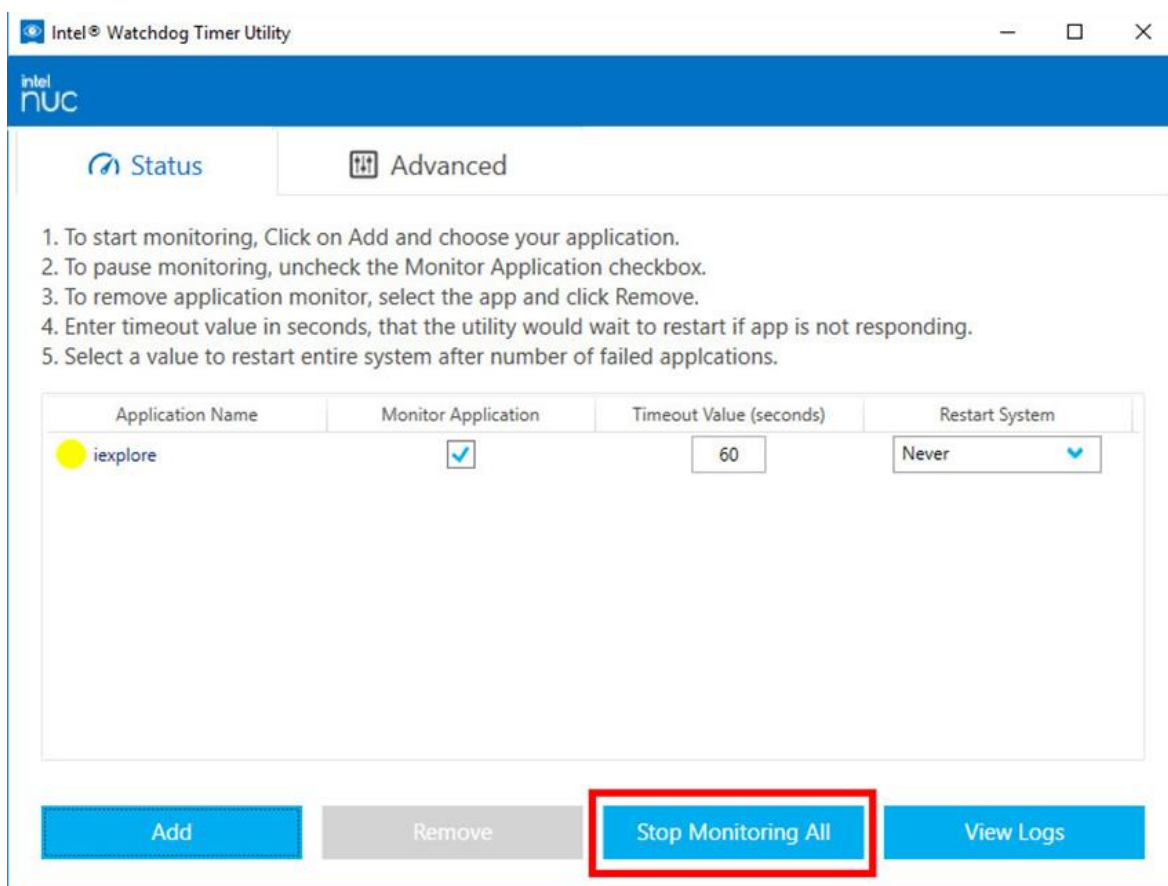
5.2 Steps to stop monitoring an application

In the Intel® Watchdog Timer Utility Status window, you can choose to stop monitoring individual applications or stop monitoring all applications.

1. To stop monitoring an individual application that has already been added in the software, uncheck the “Monitor Application” checkbox associated with the Application Name.



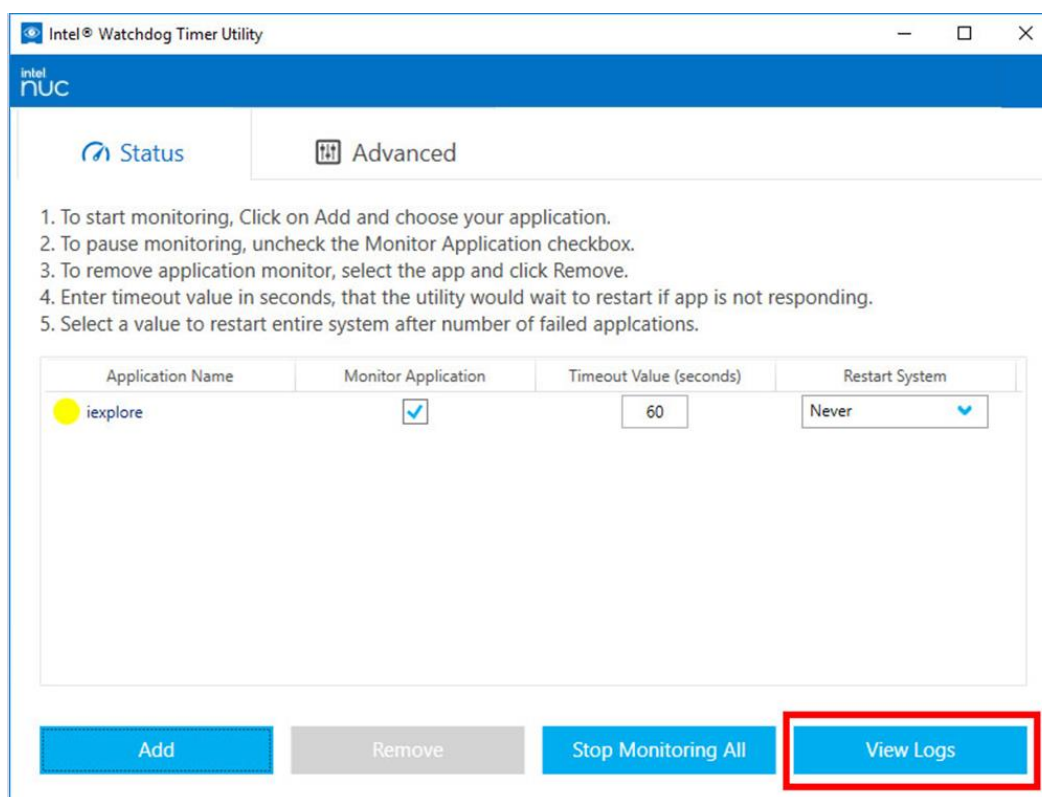
2. To stop monitoring all applications, click the Stop Monitoring All button



5.3 Monitoring options after adding an application

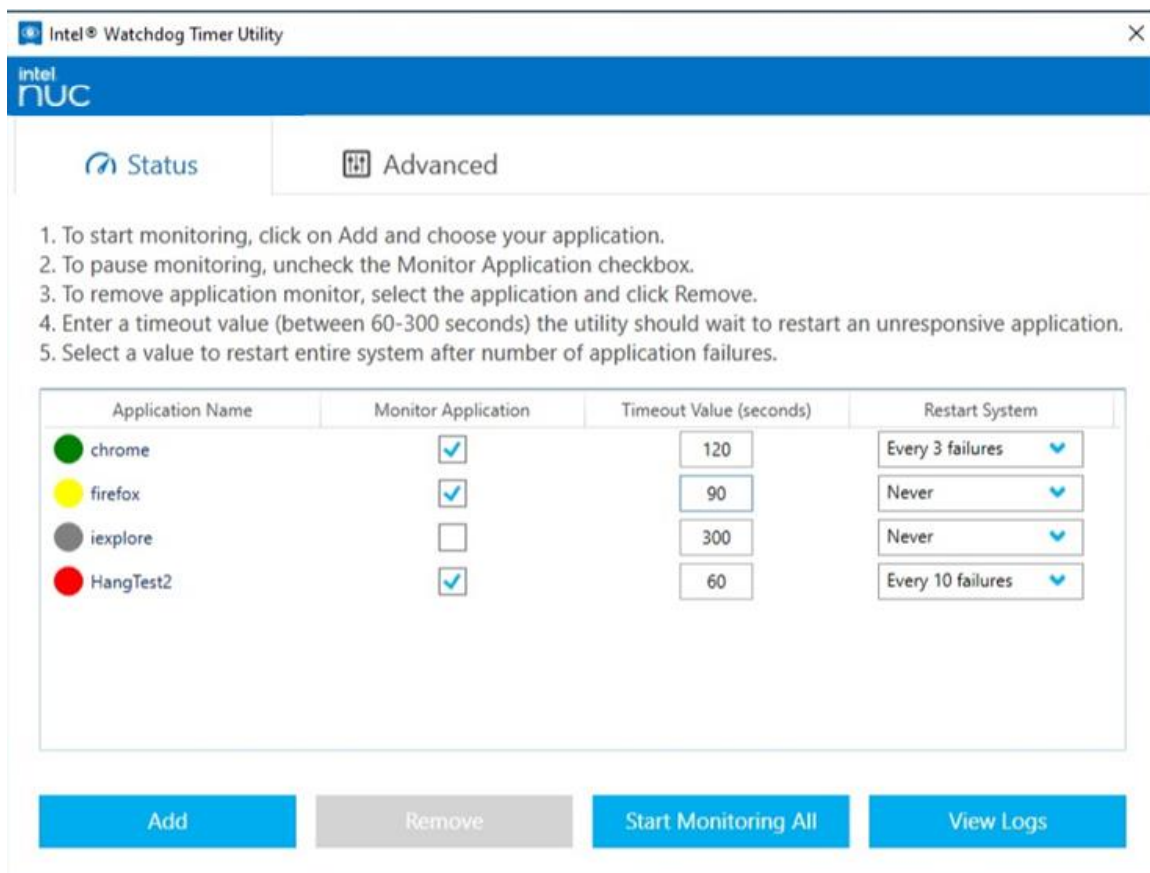
Once you add an application you can also modify the settings. Please note, it is best to stop monitoring an application before changing timeout values and restart system settings.

- Uncheck Monitor Application box to stop monitoring specific application.
- Set Timeout Value (60-300 seconds).
- Set Restart System option (Restart system after 2-10 app failure restarts, or Never)
- To remove a monitored application, stop monitoring, click on the application, and click the Remove button.
- To Open the Intel® Watchdog Timer Utility Logs, click the “View Logs” Button.



Monitored app status: The below screenshot indicates the status and color coding of applications being monitored.

- i. Green – Running
- ii. Yellow – Not running
- iii. Gray – Not monitoring
- iv. Red – Not responding

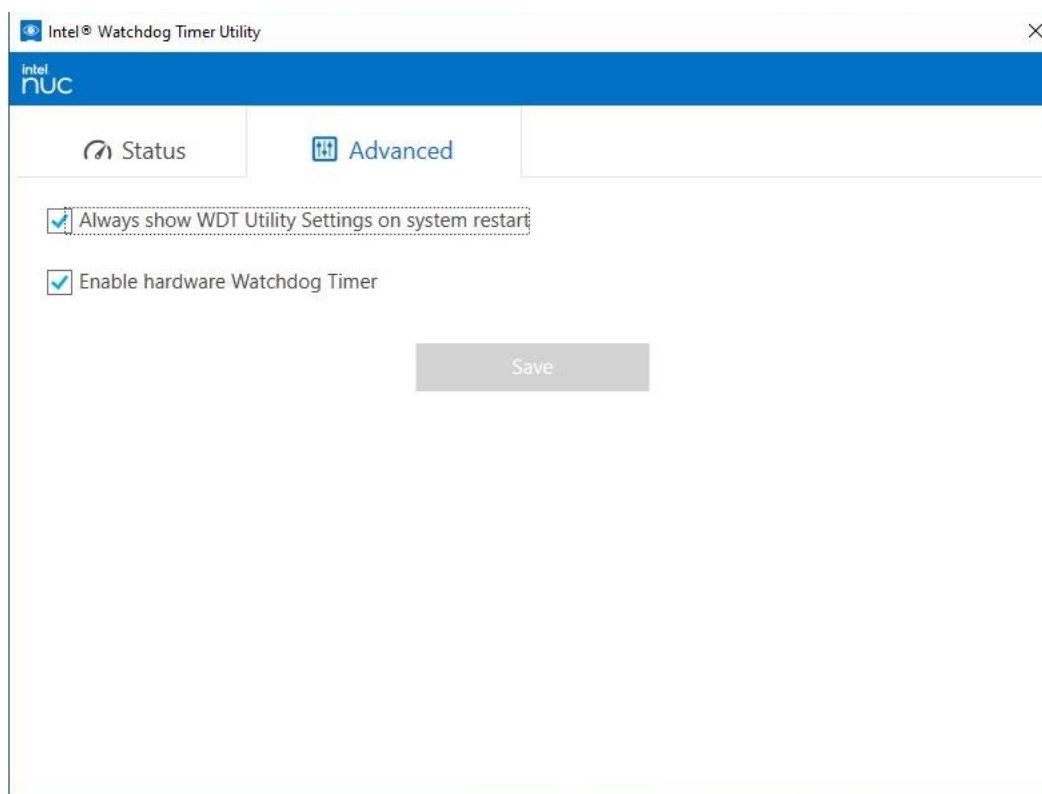


6 Advanced Settings

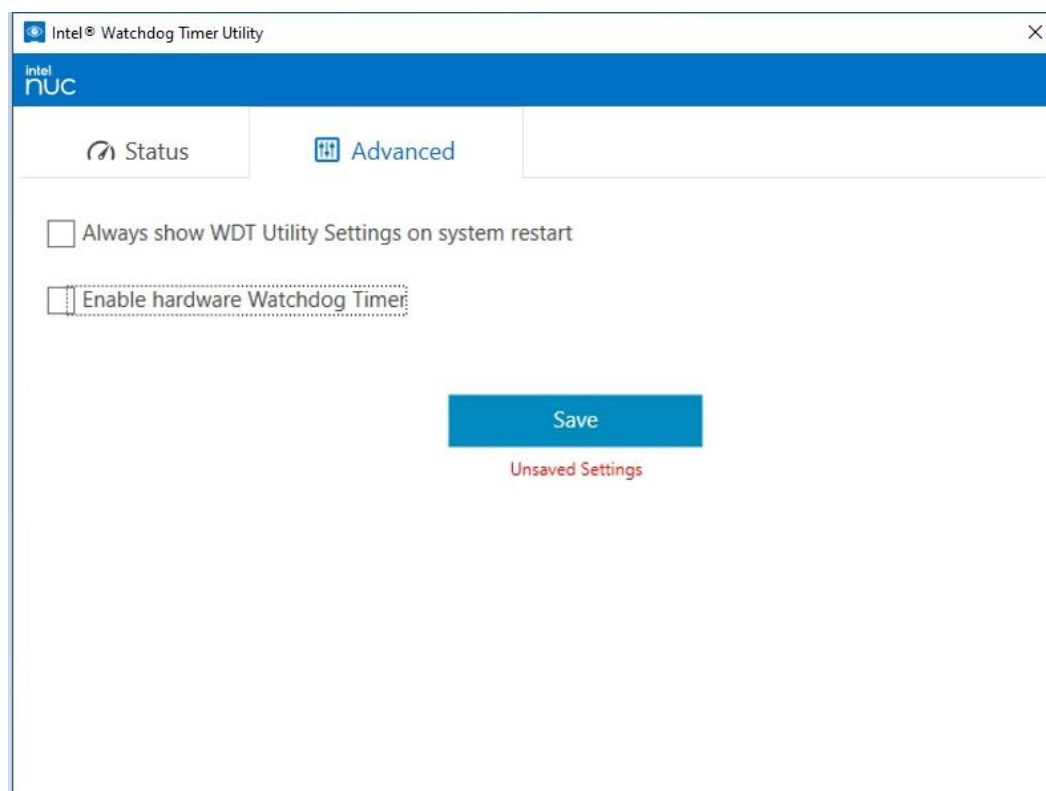
6.1 Intel® Watchdog Timer Utility Advanced Settings

In the Intel® Watchdog Timer Utility App, click the Advanced Settings tab

1. Check box 1: Always show WDT Utility Settings on System Restart
 - i. This will enable Intel® Watchdog Timer Utility Settings window to appear after Windows boots or restarts.
2. Check box 2: Enable hardware Watchdog Timer



3. Make sure to click Save if any changes are made on the Advanced Settings tab



7 Errata

7.1 Known Errata

1. Due to Windows 10 UWP app security restrictions on UWP app folders, the Intel® Watchdog Timer Utility is unable to monitor UWP apps after Windows 10 reboots.
 - i. Some UWP apps such as Microsoft Edge can be monitored after Windows is booted and logged in.
 - ii. If Windows is rebooted, the Intel® Watchdog Timer Utility cannot automatically restart UWP apps for monitoring due to security restrictions. Such apps will have a “Not monitoring” (red) indicator.